

PRESS KIT

ipbc

International Panel on
Behavior Change



WWW.IPBC.SCIENCE

CONTACT

Dr Camille Lefrançois-Coutant :
+33 (0)6 99 23 81 40 - camille.lefrancois-coutant@ipbc.science

Table des matières

Lancement du GIECO-IPBC

Manifeste

Comité de direction

Comité exécutif :

- comité scientifique,
- comité éthique,
- comité médiatique

Plus de 1500 signatures

Mobilisation internationale et
transdisciplinaire

Répartition géographique

Principaux signataires scientifiques
du manifeste :

- domaines des Sciences
Humaines et Sociales (SHS) et de
la Santé
- autres domaines scientifiques

Lancement du GIECO : Groupe International et Interdisciplinaire d'Experts sur l'Evolution des Comportements

(IPBC : International Panel on Behavior Change)



Après avoir lancé un Manifeste pour la création d'un groupe d'expertise autour des questions cruciales du changement de comportement en vue d'un équilibre économique, biologique, environnemental et sociétal plus durable (www.gieco-ipbc.org), des chercheurs français et canadien créent l'association "GIECO-IPBC" (ou **International Panel on Behavior Change**), une entité internationale, interdisciplinaire, indépendante et apolitique.

LANCEMENT
INTERNATIONAL
DU GIECO-IPBC,
SOUTENU PAR PLUS DE
1000 SCIENTIFIQUES
ET EXPERTS

FAIRE FACE, SUR LE FOND ET DANS LA DURÉE, À LA CRISE PLANÉTAIRE SOCIÉTALE ET ENVIRONNEMENTALE EN COURS

Des chercheurs français et canadien, issus du domaine des sciences humaines et sociales, lancent l'association GIECO-IPBC (www.ipbc.science), qui vise à développer un organisme scientifique de recherche multidisciplinaire sur les comportements et d'aider à faire face, sur le fond et dans la durée, à la crise planétaire sociétale et environnementale en cours et annoncée.

A l'instar du GIEC, ce groupe se destine à publier des rapports de fond, présentant un état de l'art pluridisciplinaire large des indicateurs, moteurs et freins comportementaux, relatifs au changement et à l'adaptation sociétale, économique et environnementale, mais aussi circonstancielle sur des crises en cours et sur des thématiques spécifiques.

Ces documents ont pour vocation d'être adressés à la société civile. A cette fin, l'équipe du GIECO-IPBC a rassemblé un panel international d'experts issus des nombreux domaines impliquant le comportement tels que la psychologie, les neurosciences, la sociologie, l'économie, les sciences politiques, les sciences du comportement animal, la biologie, les sciences de la santé, l'éducation, le droit, le marketing ou encore les sciences de gestion.

L'initiative est, à ce jour, supportée par 1023 chercheurs issus de plus de **75 disciplines** et de **76 pays** à travers le monde.



Après de nombreuses années d'observations et de réflexion concernant l'urgente nécessité d'agir face aux problématiques sociétales et environnementales annoncées, Jacques Fradin, médecin et psychothérapeute, fondateur de l'Institut de Médecine Environnementale (Paris, France) et Camille Lefrançois-Coutant, chercheure en psychologie cognitive et comportementale à l'IME, lancent en septembre 2018 un appel à signer un manifeste pour la création d'un groupe d'expertise scientifique et interdisciplinaire (cf. <https://gieco-ipbc.org/>).

Jacques Fradin, Président du GIECO-IPBC, décrit sa motivation en ces mots :

« J'ai lancé l'idée d'un GIECO/IPBC en 2006... mais c'était un peu tôt, nous n'aurions pas été entendus. Nous avons décidé de passer à l'acte en 2018... Et il est temps : la crise du COVID montre ce que coûte l'impréparation... qui elle-même découle du manque de prise en compte et de prise en charge du Facteur Humain, depuis l'école jusqu'à l'entreprise et aux institutions. ».

L'objectif d'un tel groupe est donc de réaliser un état de l'art scientifique transdisciplinaire large et actualisé du Facteur Humain, notamment des moteurs et freins comportementaux face aux changements à venir, des évaluations et expérimentations qui en sont faites, à destination de tous les acteurs de la société civile, afin de favoriser le changement des comportements et des usages en vue d'une société plus durable, équitable et désirable.

« C'est exceptionnel, mais face à ce qui s'annonce, les scientifiques sortent naturellement et spontanément de leur devoir de réserve et du seul champ de leur discipline. Cela s'impose à nous et modifie notre rapport à notre profession. Nous ne pouvons plus nous contenter de mesurer, d'observer, constater et partager nos conclusions qu'avec un nombre limité d'intéressés. »,

indique Camille Lefrançois, Secrétaire Général du GIECO-IPBC.

Un an après le lancement du manifeste, le canadien Stéphane La Branche, chercheur indépendant en sociologie de l'environnement, contributeur du GIEC rejoint l'initiative dont il devient coordonnateur scientifique. Les deux premières réunions internationales de scientifiques sont alors organisées, hébergées par le Programme des Nations Unies pour l'Environnement à Paris (en octobre 2019 et février 2020) et destinées à dessiner de façon collégiale les contours et le mode de fonctionnement d'une telle entité.

Les statuts de l'association GIECO-IPBC sont ensuite déposés en mars 2020. Le conseil d'administration et les comités exécutifs sont essentiellement constitués de scientifiques internationaux. Le Dr La Branche entrevoit les objectifs du GIECO-IPBC dans un contexte où, selon lui,

« la crise écologique est surtout une crise de l'imagination, imagination de nouveaux comportements, de nouvelles envies, valeurs et institutions, de nouveaux fonctionnements économiques, politiques et sociaux. Mais face aux freins à ces changements, il nous faudra beaucoup d'intelligence et de créativité mais aussi, de la volonté afin de passer à l'action. Le GIECO-IPBC vise à rendre compte de ce que les sciences du comportement disent sur les forces et les freins à ce processus de changement. »

Si le GIECO-IPBC a pour objectif de publier des rapports pluridisciplinaires et scientifiques à destination du plus grand nombre et de toutes les parties prenantes, il entend notamment engager les entreprises dans cette démarche, sans lesquelles ce changement n'aura pas lieu :

« les scientifiques de toutes disciplines ont très vite signé notre Manifeste, mais l'adhésion concrète des acteurs de l'économie ne se fera que si le GIECO-IPBC élargit sa cible à l'étude large du Facteur Humain (FH), face aux multiples transitions, environnementale mais aussi sociale, sociétale, économique, au sens du marché de plus en plus instable et imprévisible ou des métiers confrontés au développement exponentiel de l'intelligence artificielle, etc. »,

déclare Jacques Fradin.



« Aussi sujette à critique que puisse paraître une implication des entreprises dans les travaux du GIECO-IPBC, nous ne leur donnons aucun pouvoir de décision ou de censure, nous les invitons par l'intermédiaire d'un Groupe 2 des acteurs économiques, à nourrir nos réflexions, mieux identifier les thématiques pertinentes à explorer pour résoudre les problèmes réels et sociétaux, sociaux ou environnementaux du terrain, à valider le moment venu nos expérimentations, etc. Au même titre bien sûr que nous allons créer un Groupe 3 dédié aux institutions et autres parties prenantes. Le lancement du manifeste, bien avant le COVID, nous a permis de constater que la sensibilisation à ces sujets n'était plus circonscrite à une frange bien précise de la population, mais touchait de façon très disparate toutes les catégories socio-économiques, dirigeants d'entreprises, société civile, milieux associatifs, milieux de l'éducation et scientifiques bien sûr, même s'il persiste un gap – objet premier de nos futures publications - entre la prise de conscience et les actions. »

ajoute Camille Lefrançois.

Le GIECO-IPBC prévoit donc trois groupes au sein de sa structure : les scientifiques (G1) qui produisent des livrables et deux groupes (G2 et G3) de parties prenantes, aidant à en cibler le fond et la forme, de façon réellement pertinente et utile.

Ces groupes ne sont pas membres ni électeurs au sein du GIECO-IPBC, ils ont pour mission néanmoins cruciale d'exprimer les besoins, problèmes et attentes, sur le terrain, des différents corps de la société tels que l'éducation, le milieu de la santé, l'agriculture, etc.

Ils interagiront en amont et en aval du travail du G1, veilleront à l'intelligibilité des rapports pour le grand public et son utilité opérationnelle pour les acteurs non-experts du comportement, tant institutionnels que privés. Jacques Fradin précise que :

« l'on aurait pu craindre que cet élargissement au FH ne disperse le projet initial de " prolongement du GIEC" »

Mais force est de constater que toutes ces transitions (IA, métiers, marchés, diversité...) convergent à plus d'un titre. Elles convergent sur le fond car elles tendent à insuffler une vision globale, à long terme et systémique, s'opposant ainsi au court-termisme jusqu'ici triomphant... Elles se rejoignent également sur la forme, c'est-à-dire sur le socle des ressources neurocognitives qui les sous-tendent (facultés notamment liées au cortex préfrontal), de par l'état mental qu'elles mobilisent pour accéder à toute vue d'ensemble et à l'adaptation qui en découle, espérant résoudre ainsi de façon plus systémique et cohérente les myriades de micro-raisons particulières et contradictoires (décrites dans des études trop seulement descriptives) et qui engendrent la résistance globale et profonde observée. »

À quoi, le Dr La Branche ajoute:

« et ils soulèvent tous notre question fondamentale: pourquoi et comment changeons-nous nos comportements ou non devant des enjeux de long terme ? Cette question est la plus importante car si nous ne comprenons pas les obstacles au changement durable, il sera impossible de trouver des solutions »

Le GIECO-IPBC propose donc, à travers cette mise en avant du Facteur Humain, d'impliquer - à l'aide de ses trois groupes comme un gage de succès - toutes les parties prenantes désireuses de participer à la démarche, sur le fond et dans la durée : G1 : ouvert à toutes les disciplines du comportement fondamentales et appliquées ; G2 : ouvert à tous les acteurs et secteurs économiques ; G3 : ouvert à toutes les institutions et parties prenantes.

Site GIECO-IPBC : www.ipbc.science

Site Manifeste GIECO-IPBC : www.gieco-ipbc.org

MANIFESTE



MANIFESTE DU COLLECTIF DES
SCIENCES COGNITIVES ET DU
COMPORTEMENT, POUR LA
CRÉATION D'UN GROUPE
INTERNATIONAL D'EXPERTS
POUR L'ÉVOLUTION DU
COMPORTEMENT EN FAVEUR
DU DÉVELOPPEMENT DURABLE

Nous observons actuellement de nombreuses problématiques qui impactent le monde à tous les niveaux (économique, social, environnemental, etc.). Cette crise globale est d'une gravité sans précédent. Son évolution hors de contrôle nous mène rapidement à un drame planétaire irréversible.

Ce constat a encore été l'objet récemment du second manifeste intitulé « World Scientists' Warning to Humanity : A Second Notice (1) », signé par 15 364 scientifiques de 184 pays, paru lundi 13 novembre 2017 dans la revue BioScience.

Or nous savons que le comportement humain (en tant qu'acteur et décideur, chacun à son échelle) constitue aujourd'hui LE facteur limitant d'une transition réussie vers un développement durable, équitable et désirable.

A l'instar du GIEC (2) et dans son prolongement, nous, chercheurs, experts et professionnels des disciplines touchant au comportement (au sens très large), croyons urgent de réunir dans une instance internationale adéquate (de type onusien ou autre) des experts issus de toutes nos disciplines.

Seul un tel type de structure est à même d'accompagner les institutions et les acteurs de la société vers une transition sociétale réussie, tant en matière de gestion du réchauffement climatique, des ressources et déchets que des enjeux économique-sociaux, géopolitiques ou démographiques, etc.

Cette institution aurait pour mission de :

- croiser les multiples disciplines des sciences cognitives et du comportement, afin d'en faire émerger un cœur de connaissances compactes et consensuelles,
- donner assise à des préconisations robustes, objets de livrables périodiquement réactualisés, pour les multiples champs d'applications sus-évoqués,
- dégager une juste pondération entre l'exigence (sans fin) de la science et celle immédiate d'une utilité et d'une responsabilité sociétales assumées.

Je soutiens personnellement les orientations exprimées par ce manifeste et demande aux pouvoirs publics la création rapide de telles instances internationales (et nationales) appropriées, de type Groupe Interdisciplinaire d'Experts sur l'évolution du Comportement (GIECO) ou équivalent.

SIGNATURE

(1) Ripple, W. J., Wolf, C., Newsome, T. M., Galetti, M., Alamgir, M., Crist, E., Mahmoud, M. I., Laurance, W. F. and 15, 364 scientist signatories from 184 countries (2017). World Scientists' Warning to Humanity: A Second Notice. BioScience, 67, 12, 1026-1028. Cf. <https://academic.oup.com/bioscience/article/67/12/1026/4605229>

(2) GIEC : Groupe d'experts intergouvernemental sur l'évolution du climat. Ce groupe est l'organe international chargé d'analyser scientifiquement les changements climatiques. Il a été créé en 1988, « en vue de fournir aux responsables politiques des évaluations périodiques concernant les changements climatiques, leurs incidences et les risques futurs et de leur présenter des stratégies d'adaptation et d'atténuation. ». cf. www.ipcc.ch/languages-2/francais/

CONSEIL D'ADMINISTRATION



Jacques Fradin, MD., Chairman, Co-founder. Physician, CBT Psychotherapist, Founder and Scientific Director of the Funds of Environmental Medicine Institute (IME, Paris, France)



Camille Lefrançois-Coutant, PhD, General Secretary, Co-founder. Psychologist, researcher in Behavioral and Cognitive Sciences and coordinator of the Laboratory of Psychology and Neurosciences at the Environmental Medicine Institute (IME, Paris, France)



Pr. Jackie Andrade, Member of the Board. Researcher in Health Psychology, Deputy Head of School of Psychology, Associate Dean of research, Faculty of Health: Dentistry, Medicine and Human Sciences, at University of Plymouth (United Kingdom)



Pr. Anne Berman, Member of the Board. Associate Professor of Clinical Psychology and research group leader at Karolinska Institute (Stockholm, Sweden), President Elect of the International Society of Behavioral Medicine (ISBM)



Pr. Eduardo Bessa, Member of the Board, Associate Professor, researcher in Animal Behavior at University of Brasilia (Brazil)



Pr. Dan Blumstein, Member of the Board. Professor in the Department of Ecology and Evolutionary Biology, in the Institute of the Environment and Sustainability at University of California-Los Angeles (UCLA, USA), previously invited to the panel at the United States White House conference on Environmental Education (USA, 2013)

CONSEIL D'ADMINISTRATION



Anne Bobin-Bègue, Lecturer and Researcher in Development Psychology at University of Paris-Nanterre.



Pr. Roberto Casati, Member of the Board. Director of the Jean Nicod Institute (Center of research of Cognitive Sciences, Ecole Normale Supérieure, Paris, France), researcher in Philosophy.



Pr. David Kavanagh, Member of the Board. Health Sciences researcher at Queensland University of Technology (Brisbane, Australia), Psychologist, Chair of the Mental Health and Drug Advisory Council



Nathalie Ortar, PhD, Member of the Board. Director of research of the Ministry of Ecology and Sustainable Development (Paris, France), Director of research at Laboratory Aménagement, Economie et Transports at University Lyon II (CNRS, France).

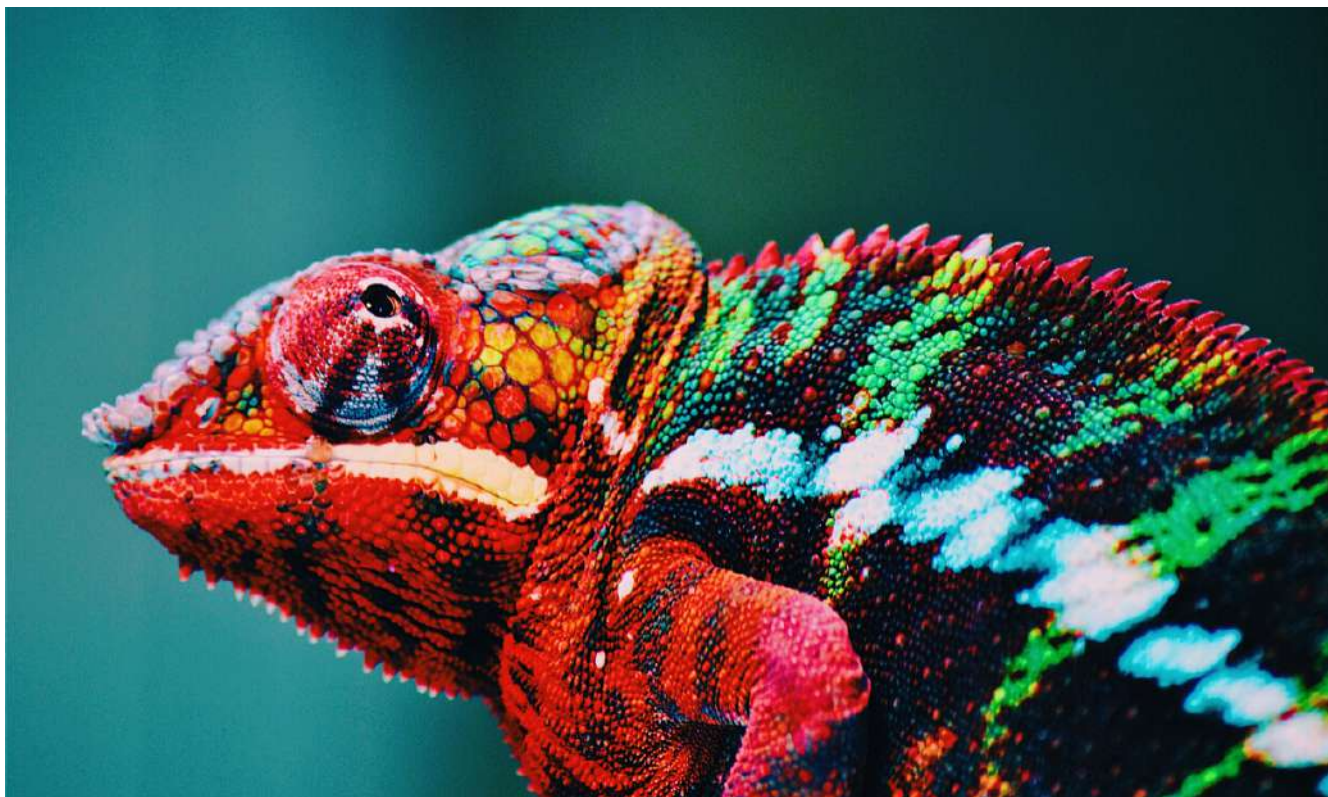


Pr. Neville Pillay, Member of the Board. Researcher in Ethology, in particular in the study of the resilience of animal species facing change influenced by Human, at University of Witwatersrand (Johannesburg, South Africa)



Pr. Imre Sezman, Member of the Board. Professor and Chair of Communication Arts at University of Waterloo (Canada), researcher in Energy Humanities, Environmental Studies, Social and Political Philosophy, co-founder of the Petrocultures Research Group, recipient of the U of Alberta's most prestigious research award.

COMITÉ EXÉCUTIF



LE COMITÉ EXÉCUTIF EST CONSTITUÉ DE 3 COMITÉS.



Le Comité scientifique, le Comité éthique et le Comité média composant le Comité exécutif sont coordonnés par Stéphane La Branche :

- Senior Lecturer,
- Contributor to the 5th report of International Panel of Climate Change (IPCC),
- Associate Researcher in Social Sciences in the field of Climate, Air and Energy, at Laboratory of Social Sciences "PACTE" (CNRS, University of Grenoble-Alpes, Sciences Po, France).

Comité scientifique



John Barry, PhD, Researcher in Green Political Economy, and Professor at School of History, Anthropology, Philosophy and Politics (Politics and International Studies, Risk and Inequality Departments), Queen's University of Belfast (Ireland).



Pr. Geoff Beattie, Researcher in Psychology at Edge Hill University (Ormskirk, United Kingdom), recently Masters Supervisor on the Sustainability Leadership Programme at the University of Cambridge (UK).



Pr. Marino Bonaiuto, Researcher in Environmental Psychology, Director of the Center for Inter-university Research in Environmental Psychology, CIRPA), at Sapienza University of Roma (Italy).



Patrizia Catellani, Senior Lecturer, Member of the Scientific Advisory Board of the European Social Survey (ESS), and of the European Association of Social Psychology (EASP) and the International Society of Political Psychology (ISPP).



Agathe Colleony, PhD, Researcher in the field of Human-Nature relationships at Human and Biodiversity Research Lab at the Technion – Israël Institute of Technology.



Pr. Denis Couvet, Researcher in the field of Ecology and relationships between Human, Societies, Biodiversity and Agriculture at the National Museum of Natural History (MNHN, Paris, France), Director of a unit of research UMR MNHN-CNRS, Knight of the Legion of Honor (France).

Comité scientifique



Johannes Daae, PhD, Researcher and Associate Professor in the field of Design for Behavioral and Sustainable Change, at Faculty of Technology, Art and Design of Oslo Metropolitan University (Norway).



Pr. Ana Gil Lacruz, Researcher in Economics and Business, University of Zaragoza (Spain)



Klaus G. Grunert, Researcher in Marketing and Consumer Behavior at Department of Management of MAAP and Director of MAAP at Aarhus University (Denmark).



Pr. H el ene Hag ege, Researcher in Education, Head of the lab FrED (Education and Diversity in Francophone Spaces), University of Limoges (France).



Pr. Evelyne Heyer, Researcher in Genetic Anthropology, director of the Eco-Anthropology unit at the National Museum of Natural History (Paris, France), recipient of the Bronze Medal of CNRS (1999, France) and of the Diderot-Curien Prize (2017, France), Knight of the National Order of Merit and of the Legion of Honor (2009, 2017, France).



St ephane La Branche, Senior Lecturer, Associate Researcher in Social Sciences in the field of Climate, Air and Energy, at Laboratory of Social Sciences "PACTE" (CNRS, University of Grenoble-Alpes, Sciences Po, France), Contributor to the 5th report of International Panel of Climate Change (IPCC).

Comité scientifique



Pr. Ana Lanero Carrizo, Researcher in Social Psychology, director of Communication (Vice-rectorate of Institutional Relations), University of Leon (Spain).



Jay Maddock, PhD, Researcher in Environmental and Health Psychology at the Department of Environmental and Occupational Health at Texas A&M University, Co-Director of the Center for Health & Nature at Houston, Methodist Research Institute (USA), Former director and chair of the University of Hawaii Public Health Program.



Pr. Erla Olsen, Researcher in Biology and Natural Science Didactics, and Education, Dean of the Faculty of Education of University of Faroe Islands.



Maria Riveros, PhD, Researcher in Affective and Social Neuroscience, University of Desarrollo (Santiago, Chile).



Uri Roll, Senior Lecturer, PhD, Researcher in Conservation Biology and Biodiversity, at Mitrani Department for Desert Ecology, Ben-Gurion University of the Negev (Beersheba, Israel).

Comité scientifique



Pr. Katariina Salmela-Aro, Researcher and Chair of Psychology and Education, Collegium Helveticum, University of Zurich (Switzerland).



Pr. Grazyna Wasowicz, Researcher in Consumer Psychology, Environmental Psychology, Health Psychology and Behaviour Change at Kozminski University (Poland).



Comité éthique

Le comité d'éthique de l'IPBC est chargé de s'assurer que toutes les activités et les résultats de l'IPBC sont équitables, diversifiés, ne résultent d'aucun conflit d'intérêts et respectent la loi.

Dans un premier temps, le Comité d'éthique travaillera à la construction d'un « Equivalent du Serment d'Hippocrate », ou charte d'engagement, avec l'aide de la promotion des étudiants du séminaire Climat Energie de l'Institut d'Etudes Politiques de Grenoble dirigé par S. La Branche (IEP, France).



Grazyna Kmita, Senior Lecturer, Researcher in Clinical and Developmental Psychology, University of Warsaw (Poland).



Laura McGuire, PhD, Researcher in Cognitive Psychology, Communication and Media in the field of Climate Change and Sustainability at Edge Hill University (Ormskirk, United Kingdom).



Gonzalo Marchant, PhD, Researcher in Health Psychology at University Lyon Claude Bernard (France).



Pr Antonino Raffone, Researcher in Psychology and Cognitive Sciences at Sapienza University of Roma (Italy), Deputy Director of the Inter-university Center ECONA, Founder and President of the International Association Consciousness, Mindfulness, Compassion.

Comité média & référents

COORDINATRICE INTERNATIONALE DU COMITÉ MÉDIA

Camille Lefrançois-Coutant, General Secretary, Co-founder, Member of Board :
camille.lefrancois-coutant@ipbc.science

RÉFÉRENT MÉDIA INTERNATIONAL & FRANCE

Stéphane La Branche, Coordinator of the Executive Committee : stephane.labranche@ipbc.science

RÉFÉRENT MÉDIA FRANCE & INTERNATIONAL

Jacques Fradin, Chairman, Co-founder. Member of Board : jacques.fradin@ipbc.science

AFRIQUE

Pr. Neville Pillay, Member of the Board

AUSTRALIE

Pr. David Kavanagh, Member of the Board

CANADA

Pr. Imre Szeman, Member of the Board

ÎLES FÉROÉ

Pr. Erla Olsen, Member of Scientific Committee

HONGRIE

Pr. Ilona Kovacs*, Member of Media Committee

IRLANDE

John Barry, Member of Scientific Committee

ITALIE

Patrizia Catellani, Member of Scientific Committee

AMÉRIQUE DU SUD

Pr. Eduardo Bessa, Member of the Board

ESPAGNE

Pr. Ana Lanero Carrizo, Member of Scientific Committee

SUÈDE

Pr. Anne Berman, Member of the Board

ROYAUME UNI

Pr. Geoff Beattie, Member of Scientific Committee

ÉTATS-UNIS

Pr. Dan Blumstein, Member of Board

* Pr. Ilona Kovacs : Researcher in Cognitive Science, director of the Institute of Psychology at the Faculty of Humanities and Social Sciences, Pázmány Péter Catholic University (Budapest, Hungary), Member of the Hungarian National Academy and Academia Europaea

+ DE 1500 SIGNATURES

AU TOTAL POUR LE MANIFESTE EN JUIN 2020

PARMI CELLES-CI, NOUS COMPTONS :



900 EXPERTS & CHERCHEURS
SCIENCES HUMAINES ET SOCIALES (SHS)
& SANTÉ



123 EXPERTS & CHERCHEURS
HORS SHS ET SANTÉ

L'initiative de l'IPBC concerne principalement le facteur humain et les sciences sociales, mais pas seulement.

Le projet implique toute discipline qui, d'une manière ou d'une autre, peut contribuer à mettre les connaissances et les outils à la disposition du plus grand nombre possible de personnes, afin d'aider à relever les défis mondiaux.

C'est pourquoi des chercheurs de toutes disciplines se sont mobilisés, à la fois en tant que scientifiques et en tant qu'êtres humains.

Le message et l'urgence de la situation sont assez clairs, et la nécessité de travailler de manière interdisciplinaire est devenue évidente :

des chercheurs et experts de plus de 75 disciplines ont signé le manifeste, ainsi que des centaines de personnes, aux professions variées, conscientes de l'importance de cette démarche pour l'avenir de notre humanité.

Mobilisation internationale et transdisciplinaire

La majorité des signataires sont des chercheurs et experts dans les domaines du comportement et de la santé au sens large du terme :

- médecine,
- psychologie,
- sciences cognitives,
- sciences affectives,
- neuropsychologie,
- sociologie,
- économie,
- droit,
- histoire,
- philosophie,
- comportement animal,
- éthologie,
- anthropologie,
- pédagogie,
- ergonomie,
- etc.

Des chercheurs et experts d'autres domaines scientifiques soutiennent également le manifeste :

- biologie,
- écologie,
- physique,
- océanographie,
- etc.

Premières réunions de travail, accueillies par le Programme des Nations Unies pour l'Environnement à Paris



Répartition géographique

LES SIGNATURES PROVIENNENT DE 76 PAYS :



Albanie, Angola, Afrique du Sud, Algérie, Allemagne, Argentine, Australie, Autriche, Belgique, Bénin, Bhoutan, Bosnie Herzégovine, Brésil, Bulgarie, Burkina Faso, Canada, Cameroun, Chili, Chine, Corée du Sud, Costa Rica, Croatie, Danemark, Emirats Arabes Unis, Equateur, Espagne, Etats-Unis, Finlande, France, Ghana, Grèce, Hongrie, Iles Féroé, Iles Malouines, Inde, Irlande, Islande, Israël, Italie, Japon, Kenya, Kosovo,

Luxembourg, Macao (Chine), Malaisie, Malte, Macédoine du Nord, Madagascar, Maroc, Mexique, Namibie, Norvège, Nouvelle-Calédonie, Nouvelle-Zélande, Oman, Pays-Bas, Philippines, Pologne, Polynésie française, Portugal, Roumanie, Royaume-Uni, Russie, Serbie, Singapour, Slovaquie, Slovénie, South Korea, Sri Lanka, Suède, Suisse, Taiwan, Tchad, Thaïlande, Tunisie, Turquie, Vietnam...

Listes des principaux signataires scientifiques

- DOMAINES DES SCIENCES HUMAINES ET SOCIALES (SHS) ET DE LA SANTÉ
- DOMAINES SCIENTIFIQUES HORS SHS & SANTÉ
- AUTRES DOMAINES



Researchers and experts in the fields of Behavior and Health in the broadest sense of the term :

medicine, psychology, cognitive sciences, affective sciences, neuropsychology, sociology, economics, law, history, philosophy, animal behavior, ethology, anthropology, pedagogy, ergonomics...

- Pr **Espen Aarseth** (Denmark), researcher in Humanities and Social Sciences, Head of the Center for Computer Games Research at the IT University of Copenhagen
- Pr **Dominic Abrams** (United Kingdom), Researcher in cognitive sciences at Centre for the Study of Group Processes, School of Psychology, University of Kent, Vice President for Social Sciences at the British Academy, Co-Director of the EURAGE (European Research on Attitudes to Ageing) research group, etc.
- Pr **Maher Abu-Hilal** (Oman), researcher in Education, Sultan Qaboos University
- Pr **Eric Achten** (Belgium), researcher in Health Sciences, Ghent University Hospital
- **Krystyna Adamska**, PhD (Poland), Psychologist, University of Gdansk
- **Sonia Adélé**, PhD (France), researcher in Humanities and Social Sciences, IFSTTAR
- Pr **Joëlle Aden** (France), researcher in Linguistics and Didactics at the University of Créteil (France)
- **Gaëlle Agius** (France), Psychologist, Stillpoint Spaces (Paris)
- **Nazmi Ajazi**, PhD (Albania), Health Professional, Shoqata Lura Forest
- Pr **Casper Albers** (Netherlands), researcher in Applied Statistics, Faculty of Behavioral and Social Sciences, University of Groningen
- Pr **Ahmad M. Alghraibeh** (Saudi Arabia), Researcher of Educational and Cognitive Psychology, Department of Psychology, King Saud University
- Pr **Kimmo Alho** (Finland), Researcher in Experimental Psychology and Cognitive Neuroscience at the University of Helsinki (Finland), member of European Academy of Sciences
- Pr **Valbona Aliko** (Albania), researcher in the field of Animal Ecophysiology, University of Tirana
- **Malou Allagnat** (France), researcher in Social and Human Sciences, Eso Nantes, Institut de Géographie et d'Aménagement Régional de l'Université de Nantes (IGARUN)
- **François Allard** (France), psychologist, founder of the Association for the Development of Families and Couples in Behavioral Therapies (ADTCCF)
- Pr **Colin Allen** (United States), researcher in Cognitive Sciences, University of Pittsburgh
- Pr **Helena Alves** (Portugal), researcher in Management and Consumer Behavior, University of Beira Interior (UBI)
- Pr **Franck Amadiou** (France), researcher in Cognitive Psychology and Ergonomics at the University of Jean Jaurès (Toulouse, France)
- **Margaret Amankwah-Poku**, PhD (Ghana), Psychologist, researcher in Health Psychology at the University of Ghana
- **Kaori Ando**, PhD (Japan), Psychologist, researcher at Nara Women's University, Department of Culture and Humanities
- Pr **Jackie Andrade** (United Kingdom), Researcher in Cognitive Sciences at the University of Plymouth (UK)
- Dr **Christophe André** (France), Psychiatrist, specialist of mindfulness
- Pr **Laurens Ankersmit** (Netherlands), researcher in Environmental Law, University of Amsterdam
- **Elisabeth Anstett**, Lecturer (France), researcher in Anthropology, CNRS
- Dr **Gérard Apfeldorfer** (France), psychiatrist, psychology and nutrition expert

- **Florence Arnaud**, PhD (France), researcher in the field of Private Law and Criminal Sciences, University Institute of Sceaux (France), Paris-Sud University
- **Paul Atkins**, PhD (Australia), psychiatrist, researcher at the Institute for Positive Psychology and Education of the Australian Catholic University (ACU)
- **Véronique Aubergé**, PhD (France), researcher in human sciences and robotics (LIG Lab, CNRS-UGA), manager of Chair Robo'ethics
- **Shadi Bagherzadeh** (Germany), researcher in Affective and Social Neurosciences, Humboldt University
- **Virginie Bagneux**, PhD (France), researcher in Social Psychology, Unicaen-Normandie University
- **Artemio Baigorri**, PhD (Spain), researcher in Sociology, University of Extremadura
- **Ani Bajrami**, Senior Lecturer (Albania), researcher in Anthropology at University of Tirania
- **Stefan Baker** (United Kingdom), Psychologist
- **Aczel Balasz**, PhD (Hungary), researcher in Experimental Psychology at the Department of Affective Psychology, Institute of Psychology (ELTE) of the Eotvos Lorand University (Budapest, Hungary)
- Pr **Adrian Bangerter** (Switzerland), researcher in psychology at the University of Neuchâtel
- Dr **Pierre-Louis Baranger** (France), physician
- Pr **Plinio Barbosa** (Brazil), researcher in Linguistics at the University of Campinas (Brazil)
- Pr **Jerome Barkow** (Canada), professor of social anthropology at Dalhousie University (Canada), Distinguished International Fellow at the Institute of Cognition and Culture of the Queen's University Belfast (Ireland)
- **Clément Barniaudy**, PhD (France), researcher in Human, Social and Cultural Geography at the University of Montpellier III (France)
- **Marion Barrault-Couchouron**, PhD (France), researcher in Clinical Psychology and Psychopathology, Psychology Laboratory of the University of Bordeaux (France)
- **Caroline Barry**, PhD (France), researcher in Biology and Health, INSERM U1178
- Pr **John Barry** (United Kingdom), researcher in Green Politics, Queen's University
- Pr **Aniko Bartfai** (Sweden), researcher in Cognitive Sciences at the Department of Clinical Sciences, Danderyd Hospital, of Karolinska Institute
- **Paul Bartolo**, PhD (Malta), researcher in Psychology, University of Malta
- Pr **Ulaş Başar Gezgin** (Vietnam), researcher in Cognitive Sciences at Duy Tan University
- **Sanja Batić Očovaj**, PhD (Serbia), Psychologist, researcher at Faculty dr Lazar Vrkatić, Union
- **Fabian Battistoni** (Belgium), Psychotherapist at Savoir Être
- **Jozef Bavolar**, PhD (Slovakia), researcher in Psychology, Pavol Jozef Safarik University in Kosice, Faculty of Arts, Department of Psychology
- **Marie Bayot**, PhD (Belgium), researcher in cognitive science at the Catholic University of Louvain
- Pr **Ariane Bazan** (Belgium), researcher in psychology at the Free University of Brussels, recipient of the Clifford Yorke Prize (2008)
- **Anthony Bean**, PhD (United States), Psychologist at The Telos Project
- **Carrie Bearden**, PhD (United States), Health Sciences Researcher, UCLA
- Pr **Hélène Beaunieux** (France), Professor of Neuropsychology at the University of Caen, France Foundation Prize
- Pr **Geoffrey Beattie** (United Kingdom), researcher in Psychology at Edge Hill University, former professor at the University of Manchester, former Head of the Department of Psychology, former Head of the School of Psychological Sciences, Professorial Research Fellow in the Sustainable Consumption Institute (SCI), Visiting Professor at the University of

California, Santa Barbara, Fellow of the [British Psychological Society](#), of the [Royal Society of Medicine](#), etc.

- **Frauke Becker**, PhD (United Kingdom), researcher in Health Economics at University of Oxford
- Dr **Maja Becker** (France), researcher in Social Psychology at the laboratory "Cognition, Langues, Langage et Ergonomie" (CLLE) of the University Jean Jaurès (Toulouse, France)
- **Indrit Bègue**, PhD (Switzerland), researcher at the Laboratory for Clinical and Experimental Psychopathology of Faculty of Medicine/ University of Geneva, Psychiatrist at the Adult Psychiatry Division / Department of Mental Health and Psychiatry/ University hospitals of Geneva
- Pr **Laurent Bègue** (France), professor of social psychology at the University Pierre Mendès France of Grenoble, member of the University Institute of France, director of the Maison des sciences de l'Homme Alpes
- Pr **Irène Bellier** (France), researcher in Anthropology and Indigenous people's rights at CNRS, former Bronze Medal of CNRS
- **Béatrice Bellini**, PhD (France), researcher in Management Sciences, Paris Nanterre University
- **Josabel Belliure**, PhD (Spain), researcher in Behavioral Ecology, University of Alcalá
- **Marie-Ange Benraissi** (France), psychologist, Stillpoint Spaces Paris
- **Moez Ben Yedder**, PhD (United Arab Emirates), researcher in Management Sciences, Abu Dhabi University
- Pr **Donato Bergandi** (France), Professor of philosophy at the Institute of Systematic approach, Evolution and Biodiversity of the National Museum of Natural History (France)
- Pr **Dominique Berger** (France), researcher in Educational Sciences at the Claude Bernard University (Lyon, France)
- **Svein Bergvik**, PhD (Norway), Psychologist, researcher at UiT The Arctic University of Norway
- **Aviva Berkovich-Ohana**, PhD (Israel, ליאָרשי), Researcher in cognitive sciences, Head of The Neuro-phenomenological lab studying brain, mind and behavior, University of Haifa
- **Julien Bernard**, PhD (France), researcher in Sociology, Deputy Director of the Department of Sociology of the University Paris-Nanterre, member of the Laboratory Sophiapol and of LASCO (Paris-Nanterre)
- **Thiago Bernardino** (Brazil), Health Professional, University of Sao Paulo
- **Mélissa Berthet**, PhD (France), researcher in Behavioral Ecology, Primatology at the Institute Jean Nicod of the École Normale Supérieure of Paris (France)
- Pr **Alain Berthoz** (France), researcher in Cognitive Sciences, former Director of the Laboratory of Physiology of Perception of Collège de France, elected member of the International Academy of Astronautics and of the Academia Europaea, member of the Sciences Academy (France), awarded of the CNES medal, La Caze Sciences Academy prize, Daw Award for the Neuroscience (USA), etc.
- **Aline Bertin**, PhD (France), researcher in Ethology at [French National Institute for Agricultural Research](#) (INRA, France)
- **Vincent Bertrand**, PhD (France), researcher in Sustainable Urbanism, University of Lorraine
- Pr **Gilles Bertschy** (France), Psychiatrist, researcher and Head of the unit of Psychiatry, Mental Health and Addictology of the Strasbourg University
- **Benjamin Besnard** (France), researcher in Economics, Laboratoire Aménagement Economie et Transports, ENTPE
- Pr **Eduardo Bessa** (Brazil), research in the field of Behavioral Ecology at the University of Brasilia
- **Silvana Bettiol**, PhD (Australia), Health Sciences researcher at University of Tasmania

- Pr **Yves-Jean Bignon** (France), researcher in Genetics and Cancer Risk, Director of the Department of Oncogenetics (Centre Jean Perrin) of Clermont-Ferrand, Pioneer of the Oncogenetics in France
- Pr **Joël Billieux** (Luxembourg), associate professor of clinical psychology at the university of Luxembourg and visiting professor at the Catholic University of Louvain
- **Emmanuelle Bioud** (France), researcher in Cognitive Sciences at Sorbonne University
- Pr **Catherine Blake** (Ireland), Health Sciences Researcher, Deputy Head of the School of Public Health, Physiotherapy and Sport Science at the University College Dublin, etc.
- Pr **Catherine Blatier** (France), researcher in Developmental Psychology and Delinquency at the University Grenoble Alpes
- **Bérénice Blondel** (France), Student in Politics, Science Po Grenoble
- Pr **Daniel Blumstein** (United States), researcher in the field of Behavioral Ecology, chair for the Department of Ecology and Evolutionary Biology of the Institute of the Environment and Sustainability (University of California, Los Angeles, UCLA), invited expert at the White house Summit on Environmental Education (USA, 2013), etc.
- **Xavier Blusseau** (France), Osteopath, vice-president of the French Association of Osteopathy
- **Anne Bobin-Bègue**, PhD (France), researcher in Developmental and Neurocognitive Sciences, Laboratoire Ethologie, Cognition, Développement, Université Paris Nanterre
- **Bojana Bodroža**, PhD (Serbia), Psychologist, researcher at Department of Psychology, Faculty of Philosophy, University of Novi Sad
- Pr **Klaus Boehnke** (Germany), researcher in Social Science Methodology, Jacobs University Bremen, Deputy Director of the International Laboratory of Sociocultural research (Superiori School of Economics, Moscow)
- **Sylvain Bohic**, PhD (France), researcher in Health Sciences, INSERM-Synchrotron Radiation for Biomedicine
- **Sebastien Bohler**, PhD (France), Neuroscientist, Editor in Chief of Cerveau & Psycho
- **Carine Bokobza** (France), Psychotherapist, Stillpoint Spaces Paris
- **Noëllie Bon**, PhD (France), researcher in Linguistics
- Pr **Marino Bonaiuto** (Italy), Professor of Psychology at the University of Sapienza of Roma, deputy director of the Inter-university Center of Research in Environmental Psychology (CIRPA)
- Pr **Guido Bondolfi** (Switzerland), Psychiatrist, researcher at the University of Geneva
- **Godlieve Bonfanti**, PhD (France), expert in Affective and Social Neuroscience, Transformind
- **Christian Bonidal**, PhD (France), researcher in Cognitive Sciences, Les béquilles du cognitif
- Pr **Mirilia Bonnes** (Italy), researcher at the Department of Psychology of Development and Socialization Process, and Founder of the Inter-university Center of Research in Environmental Psychology (CIRPA) at the University Sapienza of Roma (Italy)
- **Virginie Bonnot**, PhD (France), researcher at the Laboratory of Social Psychology of the University René Descartes (France)
- **Susana Borràs**, PhD (Spain), researcher in Environmental Law at Tarragona Center for Environmental Law Studies (CEDAT)- Rovira i Virgili University
- **Catherine Bortolon**, PhD (France), researcher at the Department of Psychology of the University of Grenoble-Alpes (France)
- **Ana María Botey**, PhD (Costa Rica), researcher in History and Policies at the University of Costa Rica
- **Jean Boucher**, PhD (United States), researcher in the field of Sociology and Climate Change, Arizona State University
- **Jordane Boudesseul**, PhD (Peru), researcher in Psychology, Instituto de Investigacion Cientifica (IDIC)

- **Etienne Bourel** (France), researcher in Anthropology, University of Lyon
- **Ghislain Bourg**, PhD (France), Researcher in Humanities and Social Sciences, Auxilia (France)
- Pr **Sacha Bourgeois-Gironde** (France), researcher in economics and cognitive sciences at the University Panthéon-Assas of Paris
- **Paul Bourguine**, PhD (France), Researcher in cognitive sciences, President of CS-DC UNESCO UniTwin
- Pr **Dalila Bovet** (France), researcher at Ethology, Cognition, Development Laboratory of the University Paris-Nanterre
- **Boyka Bratanova**, PhD (United Kingdom), Psychologist, researcher and Co-Director of the Centre for Research into Equality, Diversity and Inclusion at St. Andrews University
- **Markus Brauer**, PhD (United States), researcher in Social Psychology specialized designing behavior change interventions, University of Wisconsin-Madison
- **Chiara Bresciani** (Italy), researcher in Anthropology, Aarhus University, James Cook University
- **Yannick Bressan**, PhD (France), researcher in neuropsychology at the Centre Français de Recherche sur le Renseignement
- Pr **Tobias Brosch** (Switzerland), researcher in Sustainable Decision-Making at University of Geneva
- Pr **Denis Brouillet** (France), researcher in the Cognitive and Sociocognitive Emerging Dynamics (Department of Psychology, EPSYLON) at the Paul Valéry University of Montpellier (France)
- **Jacqueline Brown** (Canada), Health Sciences Researcher at University of Ontario Institute of Technology
- **Jamie Brown**, PhD (United Kingdom), researcher in Psychology, Deputy Director of Tobacco and Alcohol Research Group at the University College of London (UCL)
- Pr **Rupert Brown** (United Kingdom), researcher in Social Psychology and former Director of Research and Knowledge Exchange, School of Psychology, University of Sussex
- Pr **Marijn de Bruin** (United Kingdom), chair in Health Psychology, University of Aberdeen (UK)
- **Florence Brun** (France), Expert in International Trade, ISAE - University of Lyon
- Pr **Hanna Brycz** (Poland), researcher in Social Psychology, Head of Social Psychology Division, Institute of Psychology, University of Gdansk
- **Fanny Buchart-Reder**, PhD (France), researcher at the Laboratory of Psychology of Cognitions, at the University of Strasbourg (France)
- Pr **Nicolas Buclet** (France), researcher in Economics, and in the fields of Territorial Ecology and Sustainable territorial development, Grenoble-Alpes University
- Pr **Marc Buehner** (United Kingdom), researcher in Cognitive Sciences at Cardiff University
- **Thomas Buhler**, PhD (France), researcher in Urbanism and Energy Use, ThéMA Laboratory, University of Franche-Comté
- **Christine Buisson**, Lecturer (France), researcher in Civil Engineering, Institut Français des Sciences et Technologies des Transports, de l'Aménagement et des Réseaux (IFSTTAR)
- **Henryk Bukowski**, PhD (Belgium), researcher in Affective and Social Neuroscience, Catholic University of Louvain
- **Eleanor Bull**, PhD (United Kingdom), psychologist, researcher in Health Psychology at Manchester Metropolitan University
- **Dawid Bunikowski**, PhD (Finland), researcher in Philosophy of Law, University of the Arctic Sub-group Philosophy of Law, member of the Institute of Natural Resources, Environment and Society

- Pr **Thierry Burger-Helmchen** (France), researcher in management, Faculty of Economics and Management at the University of Strasbourg
- Pr **Gordon M. Burghardt** (United States), researcher in Psychology and Ecology & Evolutionary Biology, University of Tennessee
- **Manon Cabanis** (France), researcher in Archeology at INRAP
- **Manuela Caballero**, PhD (Spain), researcher in Sociology, University of Extremadura
- **Rosa Cabecinhas**, PhD (Portugal), researcher in Social Psychology at University of Minho
- **Colin Calleja**, Senior Lecturer (Malta), researcher in Education, dean of Faculty of Education of University of Malta
- **Iratxe Calvo-Mendieta**, PhD (France), researcher in Economics at the University of Littoral Côte d'Opale
- **Laurent Cambon**, PhD (France), Psychologist, researcher in Social Psychology, University of Nice-Sophia-Antipolis
- Pr **Jean-Pierre Camilleri** (France), honorary director of Curie Institute, physician and cellular biology researcher at the university Pierre and Marie Curie of Paris 6
- Pr **Joël Candau** (France), researcher in Cognitive Sciences at the Côte d'Azur University
- Pr **Antonio Candido** (Spain), researcher at the Mind, Brain and Behavior Research Center at the University of Grenada
- **Maddalena Canna**, PhD (France), researcher in Social Anthropology at Northwestern University/ EHESS (France)
- **Laure Carbonnel**, PhD (France), researcher in Anthropology, Institut Historique Allemand- Centre de recherche sur les politiques sociales (IHA-CREPOS)
- **Richard Carmichael**, PhD (United Kingdom), Psychology, behaviour change, public engagement and policy for Net Zero/climate change, Co-Leader of the Behaviour change in Energy and Environment Policy ('BEEP') Research Network
- Pr **Sonia Carmignani** (Italy), researcher in agricultural and food law at Dipartimento di Giurisprudenza at the University of Siena (Italy)
- Pr **Samuel Carpentier-Postel** (France), researcher in Geography, Transports, Laboratoire ThéMA, University of Franche-Comté
- **Antonin Carrier** (France), researcher Humanities and Social Sciences, University of Bordeaux
- **Anaïs Carrière** (France), student in Politics, Science-Po Grenoble
- **Alecia Carter**, PhD (France), researcher in Animal Behavior and Decision-Making at the Institute of Evolution Sciences, University of Montpellier (France)
- **Angela Carter**, PhD (Canada), researcher in Environmental Politics, Department of Political Sciences, University of Waterloo
- Pr **Roberto Casati** (France), director of research in cognitive science at EHESS/ CNRS, director of Jean Nicod Institute (École Normale Supérieure)
- Pr **Patrizia Catellani** (Italy), researcher in Cognitive Sciences at the Catholic University of Milan
- Pr **Franco Cauda** (Italy), researcher in Cognitive Sciences, University of Torino
- Pr **Paolo Cavallari** (Italy), Health Sciences Researcher, University of Studies of Milan, leader of the Human Motor Control Lab
- **Francesca Cellina** (Switzerland), researcher in Sustainability Transition, Institute for Applied Sustainability to the Built Environment (ISAAC) in the University of Applied Sciences and Arts of Southern Switzerland (SUPSI)
- **Francisco Ceric**, PhD (Chile), Researcher in Affective and Social Neuroscience, Head of the Laboratory of Affective Neuroscience, University of Desarrollo
- **Nicolas Césard**, PhD (France), researcher in Anthropology and Ethnobiology at the French National Museum of Natural History

- **Grazia Ceschi**, PhD (Switzerland), Psychologist, researcher at the University of Geneva
- Pr **Vincenzo Cestari** (Italy), researcher in Cognitive Sciences, Sapienza University of Rome
- **Paul Chadwick**, PhD (United Kingdom), researcher in Clinical and Health Psychology at the University College of London (UCL)
- **Christophe Chaix**, PhD (France), researcher in the field of Climate Change, Agence Alpine des Territoires
- **Stéphanie de Chalvron**, PhD (Belgium), researcher in cognitive sciences at IME-SCEMA
- **Pierre Champollion**, HDR (France), researcher in Educational Sciences at the Laboratory Education, Culture and Politics of the University of Lyon (France)
- Pr **Kay Chang** (Macao), psychologist, researcher at the University of Macaù
- **Valérie Chansigaud**, PhD (France), researcher at the laboratory of Sciences, Philosophy, History of the Universities of Paris Diderot-Panthéon Sorbonne (SPHERE, CNRS), awarded of the Leon Rozen Prize of the French Academy (2013)
- **Georges Chapouthier** (France), Neurobiologist and philosopher, Emeritus Director of Research at the National Center for Scientific Research (CNRS), board member of Fondation droit animal, éthique et sciences (France)
- **Audrey Charnoz** (France), research engineer in Humanities and Social Sciences, IFSTTAR
- **Gérard Chasseigne**, PhD (France), director of research at the laboratory Psychologie des Ages de la Vie et Adaptation of the University of Tours
- **Christine Chataigné**, PhD (France), psychologist at Ste Marie Hospital, and researcher in Social Psychology at University Nice-Sophia Antipolis
- **Guillaume Chevance**, PhD (USA), Health Sciences researcher, University of California
- Pr **Omer Chouinard** (Canada), Emeritus Professor of Sociology and Environmental Studies at University of Moncton (Canada)
- Dr **Didier Chos** (France), physician, President of the European Institute of Dietetics and Micronutrition
- Pr **Solange Ciavaldini-Cartaut** (France), researcher in Educational Sciences, Côte d'Azur University
- **Toija Cinque**, PhD (Australia), researcher in Communication at the Faculty of Arts and Education, Deakin University (Australia)
- **Diego Cisneros-Heredia**, PhD (Ecuador), researcher in Ecology and Evolution at the University San Francisco of Quito
- **Philippe Ciuciu**, PhD (France), researcher in Neuroimaging, Center of Atomic Studies (CEA, France)
- **Corentin Clément-Guillotin**, PhD (France), researcher in Health Psychology, University of Nice-Sophia-Antipolis
- Pr **Christophe Clivaz** (France), researcher in Green Politics, Institute of Geography and Sustainability, University of Lausanne
- Pr **Fabrice Clément** (Switzerland), researcher in Cognitive Sciences, University of Neuchâtel
- Pr **Jean Clobert** (France), researcher in Behavioral Ecology, Director of Station d'Écologie Expérimentale du CNRS (Moulis, France)
- **Valérie de Cock**, PhD (Belgium), researcher in Social Sustainability at the Solvay Brussels School
- Pr **David Cohen** (France), Head Department of Child and Adolescent Psychiatry, Sorbonne University, Pitié-Salpêtrière Hospital (France)
- **Agathe Colleony**, PhD (Israel), researcher in Conservation psychology, Technion – Israel Institute of Technology
- **Isabelle Colombet** (France), Physician
- **Pascal Colombier** (France), Pharmacist

- **Aymery Constant**, PhD (France), Psychologist, researcher at EHESP School of Public Health
- Dr **Nick Cooling** (Australia), Director of Electives & Internationalization and Senior Lecturer in Medical Practice at the University of Tasmania (Australia)
- **Nicolas Coquery**, PhD (France), researcher in Neuroscience, Neuroimaging, Nutrition, INRA
- Pr **Michael Corballis** (New Zealand), Researcher in cognitive sciences, University of Auckland
- Pr **Olivier Corneille** (Belgium), professor of psychology at the Catholic University of Louvain, fellow of the Society for Experimental Social Psychology
- **Aurélien Cornil** (Belgium), Teaching Assistant and PhD Student of the Laboratory for Experimental Psychopathology Catholic University of Louvain
- **Victor Corral-Verdugo**, PhD (Mexico), researcher in Environmental Psychology, University of Sonora (Mexico)
- **Deborah Cracknell**, PhD (United Kingdom), psychologist, Honorary Research Fellow at the University of Plymouth
- **Kevin Cradock** (Ireland), researcher in Humanities and Social Sciences, National University of Galway Ireland
- **Krisztina Csabai**, PhD (Hungary), assistant professor of psychology, Pázmány Péter Catholic University, Institute of Psychology chair, Department of Developmental and Clinical Child Psychology
- **Jesse Cushman**, PhD (United States), researcher in Affective and Social Neuroscience, National Institute of Environmental Health Sciences
- **Johannes Daae**, PhD (Norway), researcher in Design for Sustainable Behaviour, OsloMet – Oslo Metropolitan University
- **Alexies Dagnino**, PhD (Chile), researcher in Neuroscience and Behavior at the University of Valparaíso
- Pr **Marie Dahlin** (Sweden), psychiatrist at Norra Stockholm and associate professor at the Center for Psychiatry Research/ Department of Clinical Neuroscience of the Karolinska Institute
- **Davide Dal Cason**, PhD (Belgium), researcher Psychological Sciences (Centre de Recherche en Psychologie du Travail et de la Consommation) at the Free University of Brussels (ULB, Belgium)
- **Cécile Dantzer**, PhD (France), researcher in Psychology, Health Psychology, University of Bordeaux
- Pr **Bruno Dauvier** (France), researcher in cognitive sciences at the Center of Research of Knowledge, Language and Emotion Psychology, Aix-Marseille University (France)
- **Olivier David**, PhD (France), researcher in Cognitive Sciences, Team leader “Brain stimulation and systems neuroscience”, INSERM. U1216 Grenoble Institute of Neuroscience
- Pr **Taylor Davis** (United States), researcher in Cognitive Sciences at Purdue University, College of Liberal Arts, member of the Building Sustainable Communities
- **Rémi de Bercegol**, PhD (France), researcher in Urbanization, Center of Human Sciences of New Delhi, Laboratoire Techniques Territoires Sociétés (LATTTS, Ecole Nationale des Ponts et Chaussées, University Paris Est)
- **Gilles Débizet**, HDR (France), researcher in Climate and Energy Transition, PACTE Laboratory, University of Grenoble-Alpes, Advisory Board of SDEWES Conferences
- **Christelle Declercq**, PhD (France), researcher in Development Psychology at the Laboratory of Cognition, Health, Society at the University of Reims-Champagne Ardenne (France)
- **Simon De Dein**, PhD (Australia), researcher in Cognitive Psychology, University of Melbourne
- Pr **Maryse Delaunay** (France), Development Psychology researcher at the University of Caen
- **Jory Deleuze**, PhD (Belgium), Psychologist, researcher at Le Beau Vallon

- **Christina Della Giustina**, PhD (Netherlands), researcher in Humanities and Social Sciences at Slade School of Fine Art, University College of London (UK), HKU Utrecht (NL)
- Pr **Yvonne Delevoeye-Turrell** (France), researcher in Cognitive Sciences, Lille University
- Dr **Jean-Michel Delperdange** (Belgium), physician
- **Sylvain Delouvée**, PhD (France), researcher at the Center of Psychology, Cognition and Communication Research at the University of Rennes (France)
- **Sylvain Delplanque**, PhD (Switzerland), Researcher in Affective and Social Neuroscience, University of Geneva
- Pr **Christiane Denys** (France), director of research of Institut de Systématique, Évolution, Biodiversité of the National Museum of Natural History (France)
- **Colin Deransart**, PhD (France), researcher in health Sciences, INSERM
- **Sylvain Dernat**, PhD (France), researcher in social sciences at the National Institute of Agronomic Research (INRA, France)
- Pr **Ann DeSmet** (Belgium), Health Sciences researcher, ULB
- Pr **Olivier Desrichard** (Switzerland), director of the Health Psychology Research Group of the University of Geneva
- **Anna Dessertine**, PhD (France), researcher in anthropology, Institut de Recherche pour le Développement (IRD),
- **Guillaume Dezecache**, PhD (United Kingdom), researcher in Affective and Social Neuroscience, British Academy Newton International Fellow, University College London
- **Chantal Delon-Martin**, PhD (France), Researcher in the field of Health Sciences, Neurosciences, at Grenoble Institute of Neurosciences (GIN) - INSERM
- **Clément Dillenseger** (France), researcher in Environment and Sociology, Ecole Normale Supérieure de Lyon (ENS)
- **Alexandra Dima**, PhD (France), Health Sciences Researcher at University of Claude Bernard Lyon (France)
- Pr **Albert Doja** (France), researcher in Social Anthropology at CLERSÉ (Centre Lillois d'Études et de Recherches Sociologiques et Économiques) – University of Lille, member of the Albanian Science Academy, former Visiting Research Scholar at Harvard University, former honorary member of the Department of Anthropology of the University College London, seconded to the UN program for the Development
- Pr **Dariusz Dolinski** (Poland), Psychologist, researcher at SWPS University of Social Sciences and Humanities
- Pr **Franck Domahs** (Germany), researcher in Cognitive Sciences, University of Erfurt
- **Stefano de Dominicis**, PhD (Denmark), assistant professor in Sport and Health Psychology, Social and Environmental Psychology at the unit Sport, Individual and Society of the University of Copenhagen (Denmark)
- **Thibaut Dondaine**, PhD (France), Neuropsychologist, researcher at the University of Lille (France)
- **Guy Doron**, PhD (Israel), Psychologist at IDC Herzliya
- **Vilius Dranseika**, PhD (Lithuania), researcher in Philosophy and Asian Studies, Vilnius University
- **Jérôme Drouard** (France), Health Professionnal
- **Hugh Drummond**, PhD (Mexico), researcher in Behavioral Ecology, Universidad Nacional Autónoma de Mexico
- Pr **Bruno Dubois** (France), Professor of Neurology at the Pierre and Marie Curie University (Paris), director of the Cognitive Illness Center of the Salpêtrière Hospital, director of the Institute of the Memory and the Alzheimer disease, director of the Foundation of the Alzheimer Research, director of research at the National Institute of Health and Medical Research (INSERM, France)

- **Guillaume Dumas**, PhD (France), research fellow of the Human Genetics and Cognitive Functions Laboratory in the Pasteur Institute (France), and affiliate member of the Human Brain and Behavior Laboratory, in the Center for Complex Systems and Brains Sciences of Florida Atlantic University (US)
- **Maryvonne Dussaux** (France), researcher in Education for Sustainability at the University of Paris Est Créteil
- Pr **Luis Ebensperger** (Chile), researcher in Behavioral Ecology at the Catholic and Pontifical University of Chile
- **Melissa Elbez** (France), researcher in Humanities and Social Sciences, EHESS, Institut de Recherche Interdisciplinaire sur les Enjeux Sociaux (Iris)
- **Andreas Eriksson** (France), researcher in Social and Human Sciences, Laboratoires d'Études et de Recherches Appliquées en Sciences Sociales (LERASS)
- **Andreea Ernst-Vintila**, PhD (France), researcher in Social Psychology at the University of Nanterre (Paris)
- Pr **Inma Estevez** (Spain), researcher in Health Sciences at IKERBASQUE
- Pr **Francis Eustache** (France), director of the Imagery and Neurosciences Center (Cyceron, Caen, France), Director of the INSERM-EPHE unit Neuropsychologie et imagerie de la mémoire humaine (France)
- Dr **Laurent Fabbricatorre** (France), physician, psychotherapist at Stillpointspaces (Paris)
- Pr **Muriel Falaise** (France), researcher in Law, University Institute of Technology, University of Lyon
- **Julien Falgas**, PhD (France), researcher in Communication, Crem, University of Lorraine
- Pr **Michael Fanselow** (United States), researcher in Behavioral Neuroscience, UCLA
- **Juan Antonio Fargallo**, PhD (Spain), researcher in Behavioral, Evolutionary Ecology, Museo Nacional de Ciencias Naturales – CSIC
- **Gabriella Fekete**, PhD (France), researcher at the Laboratory of Language Dynamics (DDL) of the University of Lyon (France)
- **Florence de Ferran**, Lecturer (France), researcher in Business, specialist of fair trade and socially-responsible behaviors, University of La Rochelle (France)
- Pr **Jamie Feusner** (USA), researcher in Psychiatry and Biobehavioral Sciences, director of the UCLA Adult OCD Intensive Treatment program at the Brain Research Institute of the University of California (UCLA)
- Pr **Christian Fiebach** (Germany), researcher in Neurocognitive Sciences, Head of the Laboratory for Cognitive Neuroscience of Goethe University Frankfurt
- Pr **Nicolas Fieulaine** (France), researcher in Social Psychology, University Lyon 2/ National School of Administration
- **Corey Fincher**, PhD (United Kingdom), researcher in Cognitive Sciences, University of Warwick
- Pr **Maryanne Fisher** (Canada), researcher in Humanities and Social Sciences, Saint Mary's University
- **Alice Follenfant**, PhD (France), researcher at the Laboratory of Psychology of the University of Bordeaux (France)
- Pr **Béatrice Fleury** (France), researcher in Humanities and Social Sciences at University of Lorraine, President of the 71st section of National Council of Universities
- Pr **Agnès Florin** (France), emeritus professor, research in the domain of child psychology and education at the university of Nantes (France)
- **Darren Flynn** (United Kingdom), researcher in Health Sciences at Institute for Ageing, Newcastle University

- **Enrique Font**, PhD (Spain), researcher in Ethology, University of Valencia
- **Bálint Forgács**, PhD (Hungary), researcher in Cognitive Sciences at Eötvös Loránd University (Budapest, Hungary)
- **Ferdinando Fornara**, PhD (Italy), researcher in Social Psychology at the Department of Education, Psychology, Philosophy of the University of Cagliari (Italy)
- **Alexandra Fort**, PhD (France), researcher in Neurocognitive Science, IFSTTAR
- **Lucas Forti**, PhD (Brazil), researcher in the field of Host Behavior, Federal University of Bahia
- Dr **Marie Fournier** (France), Physician, CHU Grenoble
- Dr **Jacques Fradin** (France), Physician, Psychotherapist, Scientific Director of the Institute of Environmental Medicine (Paris)
- Pr **Jill Francis** (United Kingdom), psychologist, researcher in Health Psychology, Head of Center for Health Services Research at City University of London
- **Baptiste Frattina** (France), Engineer in Sustainable Psychology, CoSE Action
- Pr **Dominique Fresneau** (France), Emeritus Researcher at the Laboratoire d'Éthologie Expérimentale et Comparée, University Paris 13 Paris Nord
- **Rosana Fuentes**, PhD (Spain), researcher in Public relations, University of San Jorge
- **Daniel Gabaldon Estevan**, PhD (Spain), researcher in Sociology, Department of Sociology and Social Anthropology at the University of Valencia, member of the International Sociological Association (RC23 Sociology of Science and Technology and RC24 Environment and Society), of the Sustainability Transitions Research Network (STRN) and INOGOVI (Innovations in Climate Governance)
- Pr **Mohamed Gafsi** (France), Researcher in management science at Laboratoire Interdisciplinaire des Solidarités, Sociétés, Territoires (LISST), University of Toulouse (France)
- Pr **Benoit Galand** (Belgium), researcher in Psychology of Education, Catholic University of Louvain
- Pr **Edith Galy** (France), researcher in Ergonomics at the University of Nice-Sophia-Antipolis (France)
- Pr **Theodore Garland** (USA), researcher in behavior, physiology, and genetics, University of California, Riverside
- **Claire Garnett**, PhD (United Kingdom), psychologist, researcher in the Tobacco and Alcohol Research Group of the University College of London
- Pr **Margarida Gaspar de Matos** (Portugal), Health Sciences Researcher, University of Lisbon (FMH)
- **Aurélie Gauchet**, PhD (France), researcher in health psychology at the University of Grenoble Alpes (France)
- **Christian Gaudeau-Bosma**, PhD (France), psychologist at Stillpoint Spaces
- Pr **Florent Gaudez** (France), Researcher in Humanities and Social Sciences, University of Grenoble Alpes
- **Alin Gavreliuc** (Romania), Psychosociologist, researcher at the Department of Psychology of the University of Timisoara (Romania)
- Pr **Sandrine Gaymard** (France), researcher in social psychology at the University of Angers (France)
- **Philip Gee**, PhD (United Kingdom), Psychologist, researcher at the University of Plymouth (UK)
- **Benjamin Geffroy**, PhD (France), researcher in the field of Behavioural Ecology at the the Institut Français de Recherche pour l'Exploitation de la Mer (IFREMER)
- **Nathanael Geiger**, PhD (United States), Researcher in Social Psychology, Indiana University

- **Philippe Gerber**, PhD (Luxembourg), researcher in Geography, Luxembourg Institute of Socio-Economic Research (LISER)
- Pr **Daniel Gilibert** (France), researcher in Social and Organizational Psychology at the Paul Valéry University Montpellier III (France)
- **Renske Giljam** (Netherlands), researcher in the field of Law at the University of Groningen
- Pr **Ana Gil Lacruz** (Spain), researcher in Health Economics, Consumer Behavior and Lifestyles at University of Zaragoza
- **Sophie Gille Delvoye** (France), director of the New Clinic Bordeaux Tondu
- Pr **Fabien Girandola** (France), researcher in social psychology, specialist in behavior change facing climate problems
- **Silke Goebel**, PhD (United Kingdom), researcher in Cognitive Sciences, University of York
- **Maria Eunice Gonzalez**, PhD (Brazil), researcher in Philosophy at the University of Sao Paulo
- Pr **Robin Goodwin** (United Kingdom), researcher in Psychology and Head of Psychology Department, University of Warwick
- Pr **Matthew Gorton** (United Kingdom), researcher in rural development and agri-food constraints, University of Newcastle
- **Stéphanie Gosset**, PhD (France), researcher in Social and Human Sciences, CITERES Laboratory, CNRS
- **Jana Grand** (France), psychotherapist, specialist of ACT
- Pr **Didier Grandjean** (Switzerland), researcher in Affective and Social Neuroscience, Dept. of Psychology of the University of Geneva
- **Marie-Axelle Granié**, HDR (France), researcher in Social Psychology, Mobility and Transports, IFSTTAR
- Pr **Sean Grant** (United States), researcher in Social Intervention in the Department of Social & Behavioral Sciences at the IU Richard M. Fairbanks School of Public Health, Indiana University (US), associate member of the Department of Social Policy & Intervention at the University of Oxford, adjunct member of the Southern California Evidence-based Practice Center and ExpertLens Team at RAND
- Pr **Maya Gratier** (France), researcher in cognitive sciences, founder and director of the Babylab at the University of Nanterre (Paris) University of Louvain
- **Marjolaine Gros-Balthazard**, PhD (Switzerland), researcher in the field of Economy, Tourism and Sustainability, University of Lausanne
- **Séverine Grosjean** (France), Psychologist
- Pr **Jacques Grégoire** (Belgium), Professor of Psychology at the Catholic
- Pr **Julie Grezes** (France), researcher in Cognitive Sciences, INSERM-ENS
- Pr **Klaus G. Grunert** (Denmark), researcher in Marketing and consumer behavior, Director of the MAPP Center, Aarhus University, Knight of the Order of Dannebrog (2015), former president of European Marketing Academy, etc.
- Pr **Maria P. Garcia Miguélez** (Spain), researcher in Humanities and Social Sciences, Department of Private and Business Law, University of Leon
- **Antoine Guégan** (France), researcher in Political Sciences, Ecole Nationale des Travaux Publics de l'Etat (ENTPE)
- **Astrid Guillaume**, PhD (France), Associate professor, researcher in semiotics at Sorbonne University, co-chair and founder of Société Française de Zoosémiotique, honor vice-president of the European Observatory of Plurilingualism
- **Isabelle Guinaudeau**, PhD (France), researcher in Political Science, Durkheim Center (National Center of Scientific Research, CRNS)
- **Pascale Haag**, PhD (France), researcher of psychology at Institut de Recherche Interdisciplinaire sur les Enjeux Sociaux, EHESS

- **Claudia Haase**, PhD (United States), researcher in Life-Span Development, Northwestern University
- **Nouchine Hadjikhani**, PhD (United States), Researcher in Neuroscience at the Sahlgrenska Academy in Gothenburg, Sweden & at the Martinos Center for Biomedical Imaging (Harvard Medical School)
- Pr **Hélène Hagège** (France), researcher in psychology, education for the environment at the University of Limoges
- **Joanna Hale**, PhD (United Kingdom), researcher in Behavioral Science, Centre for Behaviour Change, University College London (UCL)
- **Arnaud Halloy**, PhD (France), researcher at the Department of Ethnology and Anthropology (LAPSCOS) of the University of Nice Sophia Antipolis
- **Nelli Hankonen**, PhD (Finland), researcher in Psychology and Social Psychology at University of Helsinki
- Dr **Cécile Hanon** (France), Psychiatre, APHP
- **Nina Hansen**, PhD (Netherlands), researcher in Social Psychology, University of Groningen
- **Paul Harris** (United Kingdom), professor of music pedagogy at the Royal Academy Music (London)
- Pr **Melissa Haswell** (Australia), Researcher in Environmental and community Psychology, Queensland University of Technology
- **Steven Hayes**, PhD (United States), Psychologist, researcher at the Department of Psychology at the University of Nevada, specialist of ACT, mindfulness, Developer of Relation Frame theory, former listed by the Institute for Scientific Information as the 30th “highest impact” psychologist in the world, etc.
- Pr **Walter Hecq** (Belgium), researcher in Environmental Economics, Co-director of the Centre for Economic and Social Studies on the Environment at the Free University of Brussels (ULB, Belgium), etc.
- **Alexandre Heeren** (Belgium), associate researcher of the Institute of Psychological Science Research and of the Institute of Neurosciences of the Catholic University of Louvain
- **Narhan Heflick**, PhD (United Kingdom), researcher in Psychology at the University of Lincoln, Associate Editor of Frontiers in Psychology
- **Benoît Heilbrunn**, PhD (France), researcher in Marketing and Management Sciences at ESCP Europe
- **Jean-Nicolas Heillouis** (France), Psychonutritionist, NutriCairn
- **Christophe Heintz**, PhD (Hungary), researcher in Cognitive Science, Economics, Sociology and Social Anthropology and head of the Department of Cognitive Science at the Central European University
- **Sophie Herbst**, PhD (France), researcher in Cognitive Sciences, Center of Atomic Studies (CEA, France), NeuroSpin, INSERM
- **M^a Carmen Hernández** (Spain), researcher in Behavioral Ecology at Autonomous University of Madrid
- Pr **Thora Herrmann** (Canada), researcher in Socio-cultural impact on biodiversity, at the University of Montréal
- **Philippe Hertig**, PhD (Switzerland), researcher in Education for Sustainable Development at Haute École de Pédagogie of Vaud (Switzerland)
- Pr **Ralph Hertwig** (Germany), researcher in Cognitive Sciences, Director at the Max Planck Institute for Human Development, Director of the Center for Adaptive Rationality in Berlin
- Pr **Évelyne Heyer** (France), researcher in Genetic Anthropology, director of the Eco-anthropology unit at the National Museum of Natural History (France), recipient of the Bronze Medal of CNRS (1999, France) and of the Diderot-Curien Prize (2017, France), Knight of the National Order of Merit and of the Legion of Honor (2009, 2017, France)

- Pr **Thomas Hills** (United Kingdom), researcher in Cognitive Psychology at the University of Warwick, Director of the Bridges-Leverhulme Doctoral Training Centre, Founder and Leader of the Behavioural and Data Science MSc, Co-director of Warwick's Global Research Priority in Behavioural Science
- Pr **Denis Hilton** (France), researcher in Social Psychology at the University Jean Jaurès (Toulouse, France)
- Pr **Myra Hird** (Canada), researcher in Humanities and Social Sciences at Queen's University, Director of Canada's Waste Flow, Fellow of the Royal Society of Canada, representative of Canada at the G7 Meeting on Microplastics in Paris (2019)
- **Janina Hoffman**, Lecturer (United Kingdom), researcher in Psychology, University of Bath
- **Florence Hosteau**, PhD (Belgium), researcher in Health Sciences at Catholic University of Louvain
- Pr **Vera Hoorens** (Belgium), researcher in Social Psychology, Social and Cultural Psychology Unit, Faculty of Psychology and Educational Sciences, University of Leuven
- Pr **Jan de Houwer** (Belgium), Professor of Psychology, head of the research group "Learning and implicit process" at the University of Ghent
- **Paul Hutchison**, PhD (United Kingdom), researcher in Social Psychology at London Metropolitan University, Chartered Member and Associate Fellow of the British Psychological Society, Associate Fellow of the Higher Education Academy
- **Marie Huyghe**, PhD (France), Engineer in Urbanism and Mobility
- Pr **Marco Iacoboni** (United States), researcher in Psychiatry and Biobehavioral Sciences at the Brain Research Institute of University of California Los Angeles (UCLA)
- **Hans Ijzerman**, PhD (France), researcher in Social Psychology at the Inter-university Laboratory of Psychology of Grenoble-Alpes (France)
- **Eiko Ikegami**, PhD (United States), Walter A. Eberstadt Professor of Sociology and History, Dept of Sociology, New School for Social Research (NY, USA), Visitor, Interdisciplinary Program at Institute for Advanced Study in Princeton
- Pr **Dragos Illiescu** (Romania), Psychologist, researcher at the University of Bucharest (Romania)
- **Corina Ilin**, PhD (Romania), researcher in Applied Psychology and Urban Sustainability at the Department of Psychology of the West University of Timisoara (Romania)
- **Juan Carlos Illera**, PhD (Spain), researcher in Ecology and Evolution at the Research Unit of Biodiversity (UO-CSIC-PA), University of Oviedo
- Pr **Jennifer Inauen** (Switzerland), Health Sciences researcher, University of Bern
- **Gianna Innocenti** (Italy), Zoologist, Natural History Museum, Florence University
- **Nigel Jackson**, PhD (United Kingdom), researcher in the field of Communication and Persuasion, University of Plymouth (UK)
- Pr **Todd Jackson** (Macaù, China), researcher in Clinical Psychology at the University of Macaù (China)
- **Jazia Jagiellowicz**, PhD (Canada), researcher in Humanities and Social Sciences, Highly Sensitive Society
- **Hélène Jameux** (France), pharmacist, expert in Micro-nutrition and Psycho-nutrition
- Dr **Thierry Janssen** (Belgium), Surgeon, Psychotherapist, Founder of the School of Therapeutic Presence (EDLPT, Belgium)
- **Gwatirera Javangwe**, PhD (Zimbabwe), Psychologist, University of Zimbabwe
- Pr **Jolanda Jetten** (Australia), researcher in Psychology at Queensland University
- Pr **Marie Johnston** (United Kingdom), Psychologist, Emeritus Professor of the Institute of Applied Psychology of the University of Aberdeen, Fellow of the Royal Society of Edinburgh, the Academy of Medical Sciences, the Academy of Learned Societies for the Social Sciences the Royal College of Physicians of Edinburgh and Honorary Fellow of the

British Psychological Society, European Health Psychology Society and the Health Psychology and Public Health Network, etc.

- **Marcel Jollivet** (France), researcher in Sociology, University of Paris-Nanterre
- Pr **Rupert Jones** (United Kingdom), researcher at Plymouth University faculty of Medicine, Head of many projects funded by Horizon 2020, etc.
- **Crystal Jongen** (Australia), researcher in Humanities and Social Sciences at Centre for Indigenous Health Equity Research (CIHER), Central Queensland University
- Pr **Paul Jose** (New Zealand), researcher in Cognitive Sciences at the Victoria University of Wellington (Australia)
- **Smiljana Jošić**, PhD (Serbia), Psychologist, researcher at Institute for Educational Research
- **Manel Jouirou**, PhD (Tunisia), researcher in management at ISCAE
- **Vitomir Jovanović**, PhD (Serbia), researcher in Education Policy, Centre for Education Policy
- Pr **Marianne Jover** (France), researcher at the Department of Developmental and Differential Psychology of the University of Aix-Marseille (France)
- Pr **Konstantinos Kafetsios** (Greece), researcher at the Department of Psychology of the University of Crete (Greece)
- Pr **Vladimir Kakurinov** (Republic of Macedonia), researcher in Food Quality and Safety, KEY
- Pr **Viktor Kaldo** (Sweden), Psychologist, researcher at the Department of Psychology of Linneaus University, and Associate Professor at Karolinska Institute (Sweden)
- **Laura Kaltwasser**, PhD (Germany), researcher in Affective and Social Neurosciences at Berlin School of Mind and Brain
- Pr **Gwenaël Kaminski** (France), researcher in Cognitive Sciences at the University of Jean Jaurès (Toulouse, France)
- Pr **Mehmet Karaaslan** (Turkey), researcher in Humanities and Social Sciences, Isik University
- Pr **Emiko Kashima** (Australia), Researcher in Affective and Social Neuroscience, La Trobe University
- **Evert Kasiringua**, PhD (Namibia), researcher in Behavioral Ecology of Wildlife at the University of Namibia
- **Angelos Kassianos**, PhD (United Kingdom), psychologist, researcher in Health Psychology at the Department of Applied Health Research of the University College of London (UCL)
- **Grazyna Kutra**, PhD (Poland), Psychologist, researcher at the University of Warsaw
- **Tarek Katramiz**, PhD (Japan), researcher in the field of Sustainability, Human Security, Risk and Global environment governance at the Institute for the Advanced Study of Sustainability of the United Nations University
- Pr **David Kavanagh** (Australia), researcher in Health Sciences at the Queensland University of Technology, Fellow of the [Australian Psychological Society](#), etc.
- Pr **Daniel Kelly** (United States), researcher in Philosophy, Evolution, Cognitive Sciences at University of Purdue (US)
- **Ahot Khalafian** (France), Psychologist
- Pr **Asaid Khateb** (Israel), researcher in Education at University of Haifa, Member of the Council for Higher Education, Head of the Edmond J. Safra Brain Research Center for the Study of Learning Disabilities & Head of the Unit for the Study of Arabic Language, Chair of the PhD Committee, Dept. of Learning Disabilities of University of Haifa
- Pr **Ian Kirk** (New Zealand), Researcher in cognitive sciences, University of Auckland
- **John (Jack) Kittinger**, PhD (United States), researcher in applied Social Science and Sustainability at [Julie Ann Wrigley Global Institute of Sustainability](#) of Arizona State University (USA)

- **Joëlle Kivits**, PhD (France), researcher in the domain of Sociology and Health, director of the Expertise and Public Health Center of the University of Lorraine
- **Christian Klöckner**, PhD (Norway), researcher in Social Psychology, Department of Psychology, Faculty of Social and Educational Sciences, Norwegian University of Science and Technology
- **Grazyna Kmita**, PhD (Poland), Psychologist, researcher at the Faculty of Psychology, University of Warsaw, and at the Institute of Mother and Child
- **Bärbel Knäuper**, PhD (Canada), Health Sciences Researcher at McGill University (Canada)
- **Massimo Koester**, PhD (Belgium), researcher in Psychology at University of Leuven
- Pr **Mirosław Kofta** (Poland), Psychologist, researcher in Educational Psychology at University of Warsaw
- **Till Koglin**, Lecturer (Sweden), researcher in Transport and Mobility Planning, Lund University
- Pr **Florent Kohler** (France), researcher in Anthropology, University of Tours
- **Lenka Kostovičová**, PhD (Slovakia), researcher in Humanities and Social Sciences at the Institute of Psychology of the Slovak Academy of Sciences
- Pr **Ilona Kovacs** (Hungary), researcher in Cognitive Science, director of the Institute of Psychology at the Faculty of Humanities and Social Sciences, Pázmány Péter Catholic University (Budapest, Hungary), Member of the Hungarian National Academy and Academia Europaea
- Pr **Veronika Kralj-Iglic** (Slovenia), Health Sciences Researcher, University of Ljubljana
- **Violaine Kubiszewski**, PhD (France), researcher in Social Psychology of Education at the University of Bourgogne – Franche-Comté (France)
- Pr **Kemajl Kurteshi** (Kosovo), researcher in Pharmaceutics and Biology, University of Prishtina
- **Sylvain Laborde**, PhD (Germany), researcher in Cognitive Sciences, German Sport University Cologne
- Dr **Stéphane La Branche** (France), member of the Intergovernmental Panel of Climate Change (IPCC), associate researcher of the National Center of Scientific Research (CNRS, France), process of change management facing climatic problems specialist, expert of the Ministries of the Energy and the Environment in Quebec (Canada)
- Pr **Marta Gil Lacruz** (Spain), researcher in Social Psychology, Faculty of Sciences of University of Zaragoza
- **Anne-Claire Lafait** (France), Psychologist, researcher at the Institute of Environmental Medicine (Paris, France) and at the Catholic University of Louvain (Belgium)
- **Jari Marko Lahti**, PhD (Finland), researcher in psychology and behavioral genetics at the University of Helsinki (Finland)
- **Mathilde Lalot**, PhD (France), researcher in Ethology at Ethology, Cognition, Development Laboratory, University Paris-Nanterre
- Pr **Claus Lamm**, PhD (Austria), researcher in Affective and Social Neuroscience, University of Vienna
- **Jérémy Lamri**, PhD (France), researcher in Cognitive Sciences at Job Teaser
- Pr **Ana Lanero Carrizo** (Spain), researcher in the field of Consumer Behavior, University of Leon
- Pr **Jean-Marc Lange** (France), researcher in Education for Sustainable Development at the University of Montpellier
- Pr **Mary Anne Lauri** (Malta), researcher in Psychology, University of Malta
- **Francis Lavergne** (France), Psychiatrist
- **Gaëtan de Lavillon**, PhD (France), former researcher in Neurobiology, President and Founder of Cog'X

- **Emma Lavillair** (France), Psychotherapist, Stillpoint Spaces
- **Justin Lawson**, PhD (Australia), researcher in Environmental sociology and eco-health, Faculty of Health, Deakin University (Australia)
- **Ljiljana Lazarevic**, PhD (Serbia), researcher in Humanities and Social Sciences, Institute of psychology, University of Belgrade
- **Riadh Lebib**, PhD (France), neuropsychologist, consultant at SBT Humans Matter (France)
- **Maya Leclercq**, PhD (France), researcher in Socio-anthropology, University of Lille
- **Jean-Christophe Le Coze**, PhD (France), head of the Research on Human and Organizational Factors at the French national institute for environmental safety (INERIS, France)
- Pr **I-Ching Lee** (Taiwan), Psychologist, researcher at National Taiwan University
- Pr **Cees van Leeuwen** (Belgium), Researcher in Cognitive Sciences, KU Leuven
- **Camille Lefrançois-Coutant**, PhD (France), Psychologist at Stillpoint Spaces Paris, researcher in Cognitive Psychology and coordinator of research of the Laboratory of Psychology and Neuroscience of the Institute of Environmental Medicine (Paris)
- Dr **Jérôme Lefrançois** (France), physician
- Pr **Didier Le Gall** (France), researcher in sociology at the Center of Risk and Weakness of the University of Caen (France)
- **Bernard Le Guenno**, PhD (France), researcher in Epidemiology and Virology, Lieutenant Colonel Military Health Service, former chief Virology Laboratory of Institute Pasteur, former chief Hemorrhagic Fever Laboratory of Institute Pasteur, Consultant on management of 3 Ebola outbreaks World Health Organization (Kikwit, Liberia, Gabon), Discovered new strain of Ebola virus (Ivory Coast)
- Pr **Luc Legal** (France), researcher in Behavioral, Molecular and Chemical Ecology at the Laboratoire Écologie Fonctionnelle et Environnement (ECOLAB, CNRS) of the University Paul Sabatier of Toulouse (France)
- Pr **Céline Lemercier** (France), researcher in Cognitive Psychology and Human Factors at the University of Jean Jaurès (Toulouse, France)
- Pr **Cédric Lemogne** (France), Psychiatrist, researcher in Psychiatry, University of Paris-Descartes
- **Frédéric Lemoullec** (France), Psychotherapist
- Pr **Soledad de Lemus** (Spain), researcher in Social Psychology at the University of Grenada
- **Sylvain Lemoine**, PhD (Germany), researcher in Anthropology, Max Planck Institute
- **Yvonnick Le Pendu**, PhD (Brazil), researcher in Ethology and Marine Biology, Universidade Estadual de Santa Cruz, Ilhéus
- Dr **Bruno Leroy** (France), Physician, specialist of Motivational Interviewing
- **Claire Lesieur**, PhD (France), researcher in Health Sciences, CNRS
- Pr **Julian Leslie** (Ireland), researcher on behaviour analysis applied to environmental issues at Ulster University
- Pr **Carmel Levitan** (United States), researcher in Cognitive Sciences, Occidental College
- **Sébastien Lhardy** (France), Psychologist at Perf and Change Conseil
- **Alain L'Hostis**, HDR (France), researcher in Humanities and Social Sciences, IFSTTAR
- Dr **Yasmine Liénard** (France), psychiatrist, Mindfulness specialist
- **Manuela Linck de Romero** (Brazil), Psychologist at Federal University of Rio of Janeiro
- **Rodrigo Lingnau**, PhD (Brazil), researcher in Herpetology, Federal and Technological University of Parana
- **James Liu**, PhD (New Zealand), researcher in Psychology, Head of School at Massey University in New Zealand, etc.
- **Helen Lloyd**, PhD (United Kingdom), researcher in Health Sciences at the University of Plymouth (UK)

-
- **Janek Lobmaier**, PhD (Switzerland), researcher in Affective and Social Neurosciences, University of Bern
 - Pr **Kenneth Locke** (United States), Psychologist, researcher at the University of Idaho
 - Pr **Derk Loorbach** (Netherlands), director of DRIFT (Dutch Research Institute for Transitions), Professor of Socio-economic Transitions at the Faculty of Social Science, both at Erasmus University Rotterdam, one of the founders of the transition management approach as new form of governance for sustainable development
 - Pr **Maria Louisa Lima** (Portugal), researcher and head of the School of Social Sciences at the Department of Social and Organizational Psychology at the University Institute of Lisboa (Portugal), invited researcher at the Fondation Maison des Sciences de l'Homme and at the EPHE (France)
 - **Séverine Louvel**, PhD (France), researcher in Sociology, Science Po Grenoble PACTE
 - **Fabiana Lorencatto**, PhD (United Kingdom), psychologist, researcher in behavioral science at University College of London (UCL)
 - **Bruno Loustalet**, PhD (France), researcher in Economics and Politics, ENTPE
 - **Hsin-yi Lu**, PhD (Taiwan), researcher in Humanities and Social Sciences, National Taiwan University
 - **Virginie Luczak** (France), Physician
 - **Marine Lugen** (Belgium), researcher in Management Sciences in the field of Sustainable Development, IGEAT, Free University of Brussels
 - **Silvia Luis**, PhD (Portugal), researcher at the University Institute of Lisboa (Portugal), in the domain of Psychosociology and Environment
 - **Céline Lutoff**, PhD (France), researcher in Social and Human Sciences, University of Grenoble-Alpes
 - Pr **Eric Macé** (France), researcher in Sociology, Head of the research department "CHANGES", Emile Durkheim Center, University of Bordeaux
 - **Ibere Machado**, PhD (Brazil), researcher in Evolution and ecology of amphibian and reptile communities, Boitata Institute
 - Pr **Edouard Machery** (United States), researcher in Science Philosophy at University of Pittsburgh (USA), Director of the Center for Philosophy of Science at the University of Pittsburgh, member of the Center for the Neural Basis of Cognition (University of Pittsburgh- Carnegie Mellon University), Adjunct Research Professor in the Institute for Social Research at the University of Michigan
 - Pr **Irina Macsinga** (Romania), Researcher in cognitive sciences, West University of Timisoara, member of the International Association of People-Environment Studies
 - Pr **Brian MacWhinney** (USA), researcher in Psychology and Psycholinguistics at the Carnegie Mellon University, former President of International Association for the Study of Child Language, former Chair, Oversight Committee for the Behavioral Sciences, director of the Child Language Data Exchange System
 - Pr **Jay Maddock** (United States), Health Sciences Researcher, Texas A&M University, President-Elect at American Academy of Health Behavior, former Director of Public Health at University of Hawaii, etc.
 - Pr **Magnus Magnusson** (Iceland), researcher at and director of the Human Behavior Laboratory, University of Iceland
 - Pr **Houari Maïdi** (France), Psychologist, University of Bourgogne- Franche Comté
 - **Audrey Maille**, PhD (France), researcher in Animal Behavior and Primatology at the Eco-anthropology unit of the National Museum of Natural History (France)
 - **Jérôme Maillé** (France), Psychologist
 - **Gaell Mainguy**, PhD (France), Head of Development and International Relations at CRI- Centre de Recherches Interdisciplinaires (France)
-

- **Konrad Maj**, PhD (Poland), Psychologist, researcher at SWPS University of Social Science and Humanities
- Pr **Nicola Malizia** (Italy), Professor of Criminology, sociology of deviance, University of Enna "Kore"
- **Dorothee Marchand**, PhD (France), Environmental and social psychologist at CSTB
- **Gonzalo Marchant**, PhD (France), researcher in Health Sciences, University Claude Bernard Lyon 1
- Pr **Charlotte Marchina** (France), researcher in Social and Cultural Anthropology at Institut National des Langues et Civilisations Orientales (INLCO, Paris)
- Pr **Silvia Mari** (Italy), researcher in Cognitive Sciences, University of Milano-Bicocca
- **Olivier Marinos** (France), researcher in Geography, University of Orléans
- **Antoni Margalida**, PhD (Spain), researcher in Behavioral ecology, conservation biology at Institute for Game and Wildlife Research, IREC (CSIC-UCLM-JCCLM)
- **Nicolas Margas**, PhD (France), researcher in Sport Science, University of Caen Normandie
- **Leo Mariani**, PhD (France), researcher in Anthropology at Laboratoire d'Écoanthropologie et d'Ethnobiologie of the National Museum of Natural History, former Senior Research Fellow at Center for Khmer Studies, Visiting Associate at the National University of Singapore
- **Guilhem Mariotte**, PhD (France), researcher in Civil Engineering, Ifstarr
- **Marta Marques**, PhD (Ireland), Health Sciences Researcher, Trinity College Dublin, Honorary Research Fellow & Associate for the Centre for Behaviour Change, University College London; Research collaborator at CIPER - University of Lisbon
- **Rafael Márquez**, PhD (Spain), researcher in Cognitive Sciences, National Museum of Natural Sciences (Spain)
- **Melissa Marselle**, PhD (Germany), Psychologist, researcher in Environmental Psychology at Helmholtz Centre for Environmental Research (UFZ), and the German Centre for Integrative Biodiversity Research (iDiv)
- Pr **Marie-Claude Marsolier-Kergoat** (France), researcher in genetics at the Center of Atomic Studies (CEA, France)
- **Brice Martin**, Lecturer (France), researcher in Geography, Centre de Recherche sur les Economies, les Sociétés, les Arts et les Techniques (CRESAT), University of Haute-Alsace
- **Julien Martin**, PhD (United Kingdom), researcher in Behavioral and evolutionary ecology at the University of Aberdeen (UK)
- **Rex Martin** (Australia), researcher in Humanities and Social Sciences, at the Monash Climate Change Communication Research Hub, Monash University
- Pr **Fabienne Martin-Juchat** (France), professor of information and communication sciences at University of Grenoble Alps, director of the project Maison de la Création et de l'Innovation, UGA
- Pr **Carlos Martin-Rios** (Switzerland), researcher in Management and Labor Relations, Ecole hôtelière de Lausanne, HES-SO University of Applied Sciences and Arts of Western Switzerland
- **Frédéric Martinez**, PhD (France), researcher in Social Psychology, IFSTTAR
- **Jesús Martínez-Padilla**, PhD (Spain), researcher in Behavioral Ecology at Pyrenean Institute of Ecology (CSIC)
- **Pauline Marty**, PhD (France), researcher in Humanities and Social Sciences, Technological University of Troyes (France)
- Pr **Patricia Marzin-Janvier** (France), researcher at the Center of Education, Learning and Didactics (CREAD) at the University of Bretagne Occidentale
- **Ileana Masetti de la Guardia**, PhD (France), psychologist at Stillpoint Spaces (Paris), researcher in Neuropsychology in the Pr Bruno Dubois's team (Pitié-Salpêtrière Hospital, Paris)

- Pr **Shelly Masi** (Italy), researcher in the field of Ecology, Evolution, Biodiversity, Wildlife conservation, Primatology at the Department of Humans, Natures and Societies of the National Museum of Natural History (France)
- **Jaume Masip**, PhD (Spain), researcher in Social and Forensic Psychology, University of Salamanca
- **Manuel Massot**, PhD (France), researcher in the field of Climate Change and Behavior at the Institute of ecology and environmental sciences of Paris
- Pr **Rui Mata** (Switzerland), researcher in Cognitive and Developmental Psychology, University of Basel
- Pr **Sandrine Mathy** (France), researcher in Environmental Economics, Head of the Environment Dept, Grenoble Applied Economics Laboratory, University of Grenoble-Alpes
- **Alessio Matiz**, PhD (Italy), Health Professional, University of Udine
- **Pierre Maurage** (Belgium), researcher of the Laboratory for Experimental Psychopathology Catholic University of Louvain
- Pr **Urs Maurer** (China), researcher in Neuropsychology at Chinese University of Hong Kong
- Pr **Jon May** (United Kingdom), Researcher in Psychology at University of Plymouth (UK)
- Pr **Emeran Mayer** (United States), Medicine Doctor, researcher in in the Departments of Medicine, Physiology and Psychiatry at the David Geffen School of Medicine at UCLA, Executive Director of the G. Oppenheimer Center for Neurobiology of Stress and Resilience, and Co-director of the CURE: Digestive Diseases Research Center at UCLA
- Pr **William McCarthy** (United States), Health Sciences Researcher, UCLA Fielding School of Public Health
- **Matika McDonald**, PhD (Zimbabwe), researcher in Psychology, University of Zimbabwe
- **Suzanne McDonald**, PhD (Australia), psychologist, researcher in Psychology of Health, University of Queensland (Australia)
- **Laura McGuire**, PhD (United Kingdom), researcher in Behavioral change and Sustainability at Edge Hill University
- Pr **Louise McHugh** (Ireland), researcher in Cognitive Sciences at University College Dublin
- Pr **Stuart McLean** (Australia), Health Sciences Researcher at the University of Tasmania, Life Member of the Australasian Society of Clinical and Experimental Pharmacology and Toxicology
- **Shane McLoughlin**, Lecturer (United Kingdom), researcher in Psychology at University of Chester (UK)
- **Joël Meissonnier**, PhD (France), researcher in Mobility and Transport, Centre d'Etude et d'expertise sur les Risques, l'Environnement, la Mobilité et l'Aménagement (CEREMA)
- **Adrien Meguerditchian**, PhD (France), researcher in Cognitive Sciences and Primatology at the University of Aix-Marseille
- **Manuel Mendoza**, PhD (Spain), researcher in the field of evolutionary origin of the moral sense, National Museum of Natural Science (MNCN), Spanish Scientific Council (CSIC)
- **Freija Mendrik** (United Kingdom), researcher in Geoscience, University of Hull
- **Hugo Mercier**, PhD (France), researcher of the Evolution and Cognition Team at the Jean Nicod Institute (CNRS-EHESS-ENS, France), visiting scholar of the Philosophy, Politics and Economics Program of the University of Pennsylvania (US)
- **Catherine Mercier-Suissa**, Lecturer (France), researcher in Humanities and Social Sciences, laeLyon – University Lyon III
- **Diego Mermoud-Plaza** (France), researcher in Social and Human Sciences, University Paris 8
- **Hannah Metzler**, PhD (Austria), researcher in Cognitive Sciences, Institute for globally distributed open research and education (IGDORE)

- Pr **Susan Michie** (United Kingdom), researcher in Behavioural science in relation to health and the environment, Director of the Centre for Behaviour Change at University College London (UCL), elected Fellow of the Academy of Social Sciences, the Academy of Medical Sciences, the Academy of Behavioral Medicine Research, the Society of Behavioral Medicine, the European Health Psychology Society, the British Psychological Society and a Distinguished International Affiliate of the American Psychological Association
- Pr **Laura Migliorini** (Italy), researcher in Social Psychology at the University of Genoa
- Pr **Moïra Mikolajczak** (Belgium), professor of psychology at the Catholic University of Louvain
- Pr **Donald Miles** (USA), researcher in Behavioral Ecology and Director of the Conservation Biology Program at Ohio University
- Pr **Garcia Mira Ricardo** (Spain), researcher in Social and Environmental Psychology at the and former head of People-Environment Research Group of the Department of Psychology of the University of A Coruña, President of the International Association for People-Environment Studies (IAPS), Member of the Parliament of Spain as Spokesman for the Study of Climate Change
- **Laurie Mondillon**, PhD (France), researcher and deputy director of the unit of Psychology, Social and Educational Sciences of the University of Clermont-Ferrand (France)
- Pr **Roch L. Mongbo** (Benin), researcher in Agricultural Development and Policies, University of Abomey-Calavi (UAC), Council of Alimentation and Nutrition (CAN)
- **Alison Montagrin**, PhD (Switzerland), researcher in Cognitive Sciences, University of Geneva
- **Alessandra di Montezemolo** (France), psychologist, founder of Stillpoint Spaces
- Pr **Pedro Montoya** (Spain), researcher in Health Sciences at University of Balearic Islands
- **Pénélope Moorkens** (Belgium), Psychologist, les Facilitateurs
- Pr **Agnes Moors** (Belgium), researcher in Cognitive Sciences at the University of Leuven
- **Stephan Moratti**, PhD (Spain), researcher in Affective and Social Neurosciences, Basic Psychology Department, Complutense University of Madrid
- **Pascal Morchain**, PhD (France), researcher in Social Psychology at the University of Rennes 2
- **Nicolas Morellet**, PhD (France), researcher in Behavioral Ecology, INRA
- **Felipe Moreno**, PhD (Chile), researcher in Behavioral Ecology, Catholic University of Maule
- **Tiffany Morisseau**, PhD (France), Researcher in cognitive sciences, Strane Innovation
- **Emmanuel Mossay** (Belgium), researcher in Economics, Catholic University of Louvain
- **Gregory Moullec**, PhD (Canada), researcher in Health Promotion, École de Santé Publique de l'Université de Montréal (Canada)
- **Ludovic Moulin** (France), Psychologist and expert in Human Factors at the French national institute for environmental safety (INERIS, France)
- **Ruth Mourik**, PhD (Netherlands), researcher in Sustainable and Social Transition, Duneworks
- **Lisa Moussaoui**, PhD (Switzerland), researcher in psychology at the University of Geneva
- Pr **Miguel Moya** (Spain), Psychologist, researcher at the University of Grenada
- **Teresa Mulhern**, Lecturer (United Kingdom), researcher in Behavioral Psychology at University of Chester
- **Céline Musielak**, PhD (France), researcher at the laboratory Psychologie des Ages de la Vie et de l'Adaptation (PAVeA), University of Tours (France)
- **Eva Naess** (Norway), Psychologist, UiT, The Arctic University of Norway
- Pr **Laurent Nagle** (France), researcher in Ethology at the Ethology, Cognition, Development Laboratory, Paris-Nanterre University

- Pr **Shinichi Nakagawa** (Australia), researcher in the field of Behavioral Ecology and Evolutionary Biology at University of South West Whales (UNSW, Australia)
- **Didier Naud**, PhD (France), former researcher in the field of Epistemology and Philosophy at CNRS, Scientific Director of the Institute of Environmental Medicine (Paris)
- **Tatjana Nazir**, PhD (France), researcher in Cognitive Sciences, Institute of Cognitive Sciences Marc Jeannerod, CNRS
- **Karim Ndiaye**, PhD (France), researcher in Cognitive Sciences, Institut du Cerveau et de la Moëlle Épinière
- **Juan José Negro Balmaseda**, PhD (Spain), researcher in Behavioral Ecology at CSIC
- Pr **Daniel Nettle** (United Kingdom), researcher in Behavioral Science, Newcastle University (UK)
- **Nikki Newhouse**, PhD (United Kingdom), Health Sciences researcher, University of Oxford
- **Maria Niarchou**, PhD (United Kingdom), researcher in Psychological Medicine and Clinical Neurosciences at Cardiff University
- Pr **Grégory Ninot** (France), Health Sciences Researcher, co-founder of the International Behavioral Trials Network (IBTN), founder and director of the Epsilon Laboratory, University Paul Valéry (Montpellier, France)
- **Wilfrid Nkodia**, Psychologist, Stillpoint
- **Fausto Nomura**, PhD (Brazil), researcher in Behavioral Ecology, Federal University of Goiás
- **Chris Noone**, PhD (Ireland), psychologist, researcher in Psychology, specialist of decision-making, collective intelligence, etc. at NUI Galway University
- **Emma Norris**, PhD (UK), psychologist, University College of London
- **Ira Noveck**, PhD (France), Researcher in cognitive sciences, Institute of Cognitive Sciences Mar Jeannerod, CNRS
- **Sohvi Nuojua** (United Kingdom), researcher in Environmental Psychology at the University of Plymouth (UK)
- Pr **Thomas Nygren** (Sweden), researcher in History and Education, Uppsala University
- **Karen T. Odhiambo**, PhD (Kenya), Psychologist, researcher at the University of Nairobi
- **Luke Odiemo Okunya**, PhD (Kenya), researcher in Psychology at the University of Nairobi
- **Charles Ogunbode**, PhD (Norway), researcher in Environmental Psychology at the Department of Psychosocial Science of the University of Bergen (Norway)
- **Denis O'Hora**, PhD (Ireland), psychologist, researcher in Behavioral Science at the National University of Ireland Galway
- **Theodora Oikonomidi** (France), psychologist, Chambre Régionale d'Économie Sociale et Solidaire (CRESS, France)
- **Ali Oker**, PhD (France), researcher in Cognitive Psychology at Cognition, Health, Society unit of the University of Reims-Champagne-Ardenne
- Pr **Niels Ole Finnemann** (Denmark), Researcher in Communication and Media, University of Copenhagen
- **José Olivares Rodriguez**, PhD (Spain), researcher in psychology at the University of Murcia (Spain)
- Pr **Shane O'Mara** (Ireland), researcher in Health Sciences, Institute of Neuroscience, Trinity College of Dublin
- **Paula Regina Oliveira**, PhD (Angola), Doctor, Faculty of Medicine Katyavala Bwila University
- **Stéphany Orain-Pelissolo** (France), psychologist
- Pr **John Orbell** (United States), Professor of Psychology at the University of Oregon, working for the National Science Foundation to model the likely human response to predicted climate changes worldwide

- Pr **Violeta Orlovic Lovren** (Serbia), researcher in the field of Pedagogy for Sustainable Development, University of Belgrade
- **Massimiliano Orri**, PhD (Canada), researcher in Health Psychology at Mc Gill University
- **Marcela Osorio-Beristain**, PhD (Mexico), researcher in Behavioral Ecology at Universidad Autónoma del Estado de Morelos
- **Nathalie Ortar**, HDR (France), senior researcher in anthropology of the Ministry of Ecology, Sustainable Development (France), member of the Transport, Urban Planning and Economics Laboratory (LAET), ENTPE/University of Lyon/CNRS
- Pr **Kathrin Otrel-Cass** (Austria), researcher in Pedagogics, University of Graz
- Pr **Sabine Otten** (Netherlands), researcher in Social Psychology, University of Groningen
- Dr **Catherine Outurquin** (France), Physician
- Pr **Daniela Ovidia** (Italy), researcher in Communication and social impact of science and scientific director of the Center for Ethics in Science and Journalism, co-director of the Neuroscience and Society Lab at the University of Pavia, worked for the UNESCO and the Ministries of Health and Research (Italy), co-founder of the European Association for Neuroscience and Law
- **Oscar Oviedo-Trespalacios**, PhD (Australia), Health Sciences Researcher at the Queensland University of Technology
- **Alain Pache** (Switzerland), former in Education and Didactics, Haute École Pédagogique de Vaud (Switzerland)
- Pr **Paul Pace** (Malta), researcher in Science Education, Center for Environmental Education and Research
- Pr **Sabine Pahl** (United Kingdom), researcher in Applied Social Psychology, University of Plymouth (UK)
- **Laurence Paire-Ficout**, HDR (France), researcher in Cognitive Psychology, IFSTTAR
- Pr **Brigitte Pakendorf** (France), researcher in the field of Prehistoric Language, former Silver Award of CNRS, CNRS
- **Danaé Panagotou**, PhD (France), researcher in Psychology, Psychologist, Stillpoint Spaces Paris
- Pr **Janak Pandey** (India, भारत), Psychologist, researcher at and Former Head of Centre for behavioural and Cognitive sciences, ICSSR National Fellow, University of Allahabad, Former First Vice Chancellor of the Central University of Bihar, awarded by the International Association for Cross-cultural Psychology, etc.
- Pr **Marietta Papadatou-Pastou** (Greece), Researcher in cognitive sciences, National and Kapodistrian University of Athens
- Pr **Bernard Paquito** (Canada), researcher in Health Psychology, University of Québec at Montréal, Prize of "Lutte contre le Tabagisme de l'Académie Nationale de Médecine Française"
- **Federico Parda Silva** (France), Psychotherapist at Stillpoin Spaces Paris, and at the Center of Psychotherapy of Ville-Evrard (France)
- **Deseada Parejo**, PhD (Spain), researcher in Cognitive Sciences at University of Extremadura
- **Paola Passafaro**, PhD (Italy), researcher in social and environmental psychology at the Sapienza University of Roma (Italy)
- **Indrajeet Patil**, PhD (United States), researcher in Moral Psychology and Social Neuroscience at the Department of Psychology of Harvard University
- **Vassilis Pavlopoulos**, PhD (Greece), researcher in psychology and director of the Center for Cross-Cultural Psychology at the National and Kapodistrian University of Athens (Greece)
- **Eiluned Pearce**, PhD (United Kingdom), researcher in Evolutionary Anthropology (Social and Evolutionary Neuroscience Group) at the University of Oxford

- Pr **Alan Pegna** (Australia), researcher in Affective and Social Neurosciences, University of Queensland
- **Paulo Sonia Pellissier**, Lecturer (France), researcher in Psychophysiology, Neurosciences, Health at University of Savoie Mont Blanc, Inter-university Laboratory of Psychology, Personality, Cognition and Social Change (LIP/PC2S)
- Pr **Francesca Peressotti** (Italy), researcher in Cognitive Sciences, University of Padova
- Pr **Juan A. Pérez** (Spain), Psychologist, researcher at the University of Valencia
- **Jean-Louis Pernin**, PhD (France), researcher in Sustainable Behaviors, University Paul Valéry (LERASS-CERIC)
- **Mariana B. Perozzi Gameiro**, PhD (Brazil), researcher in Animal Welfare, University of Sao
- **Anna Perraudin**, PhD (France), researcher in Sociology, Mediterranean Laboratory of Sociology (LAMES), CNRS
- Dr **Alain Perroud** (Switzerland), Psychiatrist, Belmont Clinic
- Pr **Simon Persico** (France), researcher in Political Sciences at Sciences Po Grenoble (France)
- **Olga Perski**, PhD (UK), researcher in Health Sciences, University College of London
- **Kim Peters**, PhD (Australia), psychologist, researcher in Organizational Psychology at University of Queensland, former collaborator of Department of Foreign Affairs and Trade, the Royal Marines and the Royal College of Surgeons
- Pr **Alain Peyraube** (France), Emeritus researcher of CNRS-EHESS, Chair professor of Chinese Linguistics (EHESS, France), former director of the Institute of East Asian Linguistics (CNRS & EHESS), former director of the Institute of Advanced Studies, Collegium de Lyon, Honorary Professor at the University of Beijing, Distinguished member of the Chinese Academy of Social Sciences, member of the European Academy, Knight the Legion of Honor
- **Gerit Pfuhl**, PhD (Norway), Researcher in cognitive sciences, UiT The Arctic University of Norway
- **Neville Pillay**, PhD (South Africa), researcher in Animal Behavior, Evolution and Wildlife Ecology at the University of the Witwatersrand (Johannesburg, South Africa)
- **Audrey Pinard** (France), psychologist, member of Esprit Clair (France)
- Pr **Jean-Baptiste Pisano** (France), researcher in the field of Anthropology, Art and Culture, University of Nice-Sophia-Antipolis
- Pr **Hervé Platel** (France), Professor of neuropsychology at the University of Caen
- **Oumar Plea** (France), researcher in Sustainability, University of Nantes
- Pr **Czaba Pléh** (Hungary), psychologist, linguist, neurologist, researcher in Psychology at the Department of Cognitive Science of the Central European University, secretary of the Hungary Academy of Science, professor at the Department of Cognitive Sciences of the Polytechnic and Economical University of Budapest, awarded of the Cross of the Hungary National Order of Merit
- Pr **Gordon Pleyers** (Belgium), Professor and researcher at the Center on Consumers Relations and Responsible Marketing of the Catholic University of Louvain
- Pr **Pierrich Plusquellec** (Canada), researcher in Humanities and Social Sciences, director of the Center of Studies of Non Verbal Communication (CESCNOV), co-director of the Center of Studies on Human Stress (CESH), University of Montréal
- Pr **Hugues Poissonnier** (France), researcher in Management at Grenoble Ecole de Management (France)
- **Gary Polhill**, PhD (United Kingdom), researcher at the James Hutton Institute (UK) in the domain of technical and social innovations that support sustainable and resilient communities, president of the of the European Social Simulation Association

- Pr **Beth Polidoro** (USA), Health Sciences Researcher, Julie Ann Wrigley Global Institute of Sustainability of Arizona State University
- Pr **Frank Popper** (United States), Researcher in Humanities and Social Sciences, Rutgers and Princeton Universities
- Pr **Michael Posner** (United States), emeritus Professor of Psychology at the University of Oregon, awarded of the National Medal of Science (US), member of the British Academy
- **Jaime Potti**, PhD (Spain), researcher in Ecology and Evolution at CSIC
- **Axel Poullard**, PhD (France), researcher in Political Anthropology at EHES
- **Ana Povoas**, PhD (Belgium), researcher in Social and Human Sciences, Free University of Brussels
- **Felicia Pratto**, PHD (United States), Psychologist, researcher at the University of Connecticut, co-Winner of the Gordon Allport Prize (2011, 2014), Otto Klineberg Intercultural and Intergroup Relations Award, SPSSI (2015), etc.
- **Olivier Prévôt** (France), researcher at the Laboratory of Psychology and deputy director of the University Bourgogne- Franche-Comté
- **Anne-Laure Privat** (France), Research Engineer in Neuroscience, Institut du Cerveau et de la Moëlle Épinière (ICM)
- Pr **Goffredo Puccetti** (United Arab Emirates), researcher in Practice of Visual Arts / Design, New York University Abu Dhabi
- Pr **Vesa Puhakka** (Finland), researcher in Management and International Business, Head of Department, University of Oulu
- **Danka Purić**, PhD (Serbia), Researcher in Humanities and Social Sciences, Faculty of Philosophy, University of Belgrade
- **Florence Quinche** (Switzerland), former Instructor in Pedagogy at the Haute École Pédagogique-Vaud
- **Sabine Rabourdin**, PhD (France), researcher in Sociology, NegaWatt Institute
- **Antonino Raffone**, PhD (Italy), researcher in Cognitive Sciences, Sapienza University of Rome
- Pr **Tiziana Ramaci** (Italy), Associate Professor of Human Resource Management at the Faculty of Psychology and Education Sciences of Kore University of Enna
- **Jean-Marc Ramos**, PhD (France), Psychologist, researcher at University Paul Valéry
- **Maud Ranchet**, PhD (France), researcher in Cognitive Sciences, Mobility, Transports at IFSTTAR
- Dr **Nathalie Rapoport-Hubschman** (France), physician, psychotherapist at Behavioral Medicine Society
- Pr **Nora Rätzzel** (Sweden), researcher in Sociology at Umea University (Sweden)
- **Amanda Rebar**, PhD (Australia), Health Sciences researcher, Central Queensland University
- **Anne Reboul**, PhD (France), researcher in Cognitive Sciences, Institute of Cognitive Sciences Marc Jeannerod
- **Lynne Reeder**, PhD (Australia), Health Sciences Researcher, researcher in the domain of on the international relations theory of global interdependence, which included a focus on the ethical aspects of global governance, member of the Compassionate Mind Foundation at the University of Derby (UK), leader of the Australian Organising Group of the Charter for Compassion
- **Christian Renoux**, PhD (France), researcher in History at the University of Orléans (France)
- **Tatiana Reyes**, PhD (France), Researcher in the Field of Behavior Change and Transition, Technical University of Troyes (France)
- Pr **François Ric** (France), director of the Laboratory of Psychology of the University of Bordeaux (France)

- **Matthieu Ricard**, PhD (France), Bouddhist monk, interpreter of the Dalaï-Lama, doctor in cellular genetics, founder of humanitarian projects, author, member of the Mind and Life Institute
- Pr **Peter Richerson** (United States), Distinguished Professor Emeritus, Department of Environmental Science and Policy, University of California–Davis, Past President, Cultural Evolution Society, Evolutionary Anthropology Society, and Human Behavior and Evolution Society
- **Isabelle Richter**, PhD (United Kingdom), researcher in Behavioral Science and Environmental Communication at the University of Plymouth (UK)
- Pr **Liliana Rico Duarte** (France), researcher in Cognitive Sciences at the University of Jean Jaurès (Toulouse, France)
- **Mohideenbawa Riswan**, PhD (Sri Lanka), researcher in Sociology at South Eastern University of Sri Lanka
- **Paolo Riva**, PhD (Italy), researcher in Social Psychology at the Department of Psychology of the University of Milano–Bicocca
- **María Riveros**, PhD (Chile), researcher in Affective and Social Neuroscience, University of Desarrollo
- **Christelle Robert**, PhD (France), researcher in neurocognitive psychology at the University of Bordeaux (France)
- **Suzanne Robert-Ouvray**, PhD (France), former psychology researcher at the university of Paris-Diderot
- Pr **Ian Robertson** (Ireland), researcher and founding Director of Trinity College Institute of Neuroscience, member of the Royal Irish Academy, Visiting Professor at University College London, at Bangor University, University of Wales, and at the Rotman Research Institute, University of Toronto
- **Frédérique Robin**, PhD (France), researcher in cognitive psychology at the University of Nantes (France)
- **Anaïs Rocci**, PhD (France), researcher in Sociology and Transport, ADEME
- **Ricardo Rodrigues**, PhD (Portugal), researcher in Marketing, Management and Economics, University of Beira Interior
- **Heather Rogers**, PhD (Spain), researcher in Health Psychology, Biocruces Bizkaia Health Research Institute (Spain)
- **Daniel Roquet**, PhD (Australia), Health Sciences Researcher, University of Sydney
- Pr **Richard Rosenkranz** (United States), Health Sciences Researcher, Department Food, Nutrition, Dietetics and Health, Kansas State University, Winner of Kansas State University Excellence in Engagement Award (2018)
- Pr **Catarina Roseta-Palma** (Portugal), researcher in Public and Environmental Resource Economics at the Department of Economics of the Lisbon University Institute (ISCTE, Portugal)
- **Florence Rosey**, PhD (France), researcher in Humanities and Social Sciences, Centre d'Expertise des Risques, de l'Environnement, des Mobilités et de l'Aménagement (Cerema)
- Pr **Sébastien Roussel** (France), researcher in Behavioral economics, Environmental and resource economics at the Paul Valéry University Montpellier III (France)
- **Jean-Louis Routhier**, PhD (France), researcher in Transport, Laboratoire Aménagements Economie Transports (LAET), CNRS, University Lumière Lyon II
- Pr. **Dominique Roux** (France), Researcher in management science and consumption at University of Reims Champagne-Ardenne
- Dr **Annie Roy** (France), physician
- **Patrick Roy**, PhD (Swiss), researcher in Science Didactics at Pedagogic High School of Friburg (Swiss)

-
- Pr **Celine Rozenblat** (Switzerland), Researcher in Humanities and Social Sciences, University of Lausanne – Geoscience Faculty
 - **Lolita Rubens**, PhD (France), researcher in social psychology, specialist of changing behavior and education to sustainable behaviors
 - Pr **David Rudrauf** (Switzerland), Psychologist, Neuropsychologist, researcher at Campus Biotech, University of Geneva
 - **Florence Ruessmann**, PhD (Belgium), researcher in the field of Behavioural and Experimental Finance at Université Libre de Bruxelles (ULB)
 - **Isabelle Ruin**, PhD (France), researcher in Human Geography, Institute for Geosciences and Environmental research (IGE), University of Grenoble
 - Pr **Andy Russell** (United Kingdom), researcher in the field of Animal Behavior the Centre for Ecology and Conservation at the University of Exeter (UK), Adjunct Senior Research Fellow of Fowlers Gap Arid Zone Research Station and at School of Biological, Earth and Environmental Sciences, at the University of New South Wales (Australia), at the Station d'Écologie Expérimentale du CNRS (Moulis, France), and at the Department of Brain, Behaviour & Evolution, Macquarie University (Australia)
 - **Dorota Rutkowska**, PhD (Poland), Researcher in Humanities and Social Sciences, Faculty of Psychology, Warsaw University
 - **Nathalie Saget** (France), Psychotherapist at Systèmes & Familles and Stillpoint Spaces Paris
 - **Louise Sagot** (France), researcher in Humanities and Social Sciences, University of Caen Normandie
 - **Sunil Saini**, PhD (India), President of the Indian Association of Health, Research and Welfare
 - **Monika Salgueiro**, PhD (Spain), researcher in Health Sciences, University of the Basque Country (UPV/ EHU)
 - **Sigrid Salomonsson**, PhD (Sweden), researcher in Affective and Social Neuroscience, Center for Psychiatry Research at the Karolinska Institute
 - **Jose Carlos Sanchez-Garcia**, PhD (Spain), researcher in Management, University of Salamanca
 - Pr **Massimo Santinello** (Italy), Psychologist, researcher at the [Department of Developmental Psychology and Socialisation](#), University of Padova
 - **Jessica Sautron** (France), Psychotherapist at Stillpoint Spaces Paris
 - Pr **Philip Sayegh** (United States), researcher of neuropsychology and psychology at the Department of Psychology and associate director of the Psychology Clinic of the University of Los Angeles, California (UCLA)
 - Pr **Georges Schadron** (France), researcher at the Laboratory of Anthropology and Social and Cognitive Psychology at the University of Nice-Sophia-Antipolis (France)
 - Pr **Peter Schantz** (Sweden), researcher in the field of Movement, Health and Environment, The Swedish School for Sport and Health Sciences, GIH
 - Pr **Haline Schendan** (United Kingdom), researcher in Cognitive Sciences at Plymouth University
 - Pr **Stefan R. Schweinberger** (Germany), researcher in Affective and Social Neurosciences, Friedrich Schiller University Jena
 - **Sarah Schimchowitsch**, PhD (France), Neurocognitive researcher at the Laboratory of Psychology of Cognitions, University of Strasbourg (France)
 - **Charline Schmerber** (France), Psychologist
 - **Maude Schneider**, PhD (Switzerland), Researcher in cognitive sciences, University of Geneva
 - Pr **Benjamin Schüz** (Germany), Health Sciences Researcher and Professor of Public Health at Bremen University, Secretary of the European Health Psychology Society
 - Dr **Philippe Schwartz** (France), Physician
-

- **Catherine Schwennicke** (Belgium), psychologist, consultant at Prefrontality (Belgium)
- **Beate Seibt**, PhD (Norway), researcher at the Department of Psychology of the University of Oslo
- Pr **Aaron Seitz** (United States), researcher in Cognitive Sciences, director of UCR Brain Game Center For Mental Fitness and Wellbeing, University of California at Riverside
- Pr **Gilda Sensales** (Italy), Psychologist, researcher in Social and Political Psychology at the University of Sapienza
- **Amir Sepehry**, PhD (Canada), researcher in Neuropsychology at Adler University
- Pr **Patricia Seror**, PhD (France), researcher in Management Sciences, University Jean Moulin Lyon III
- **Jose Manuel Serrano**, PhD (Chile), researcher in Behavioral Ecology, University of Chile
- **Jean-Christophe Seznec**, PhD (France), Psychiatrist, ACT specialist, former president of *Association Francophone pour une Sciences Comportementale et Contextuelle* (AFSCC), co-founder of *S'asseoir ensemble* and *Doctopsy*
- Pr **Beate Seibt** (Norway), researcher in Cognitive Sciences at the Department of Psychology of the University of Oslo (Norway)
- **Harris Shah Abd Hamid**, PhD (Malaysia), researcher in Psychometrics and Organizational Psychology, Department of Educational Psychology and Counseling, University of Malaya
- Pr **Ladan Shams** (USA), professor of Psychology, BioEngineering, and Neuroscience and director of the Multisensory Perception Laboratory/ Brain Research Institute at the University of California Los Angeles (UCLA)
- **Rebecca Shankland**, PhD (France), psychology researcher at the University of Grenoble
- Pr **Paschal Sheeran** (United States), Researcher in Cognitive Sciences, University of North Carolina at Chapel Hill
- Pr **Andrew Sherwood** (United States), researcher Health Sciences, Psychiatry and Behavioral Sciences, Duke University (USA)
- Pr **Rainer K. Silbereisen** (Germany), researcher in Developmental Psychology at the Institute of Psychology, University of Jena, Past-President International Union of Psychological Science and Past Editor-in-Chief International Journal of Psychology
- Dr **Ida Sim** (United States), Physician, University of California
- **Emmanuelle Simon**, Lecturer (France), researcher in Communication, University of Lorraine
- **Peter Simor**, PhD (Hungary), psychologist, researcher and director of the Budapest Laboratory of Sleep and Cognition
- **Peter Slattery**, PhD (Australia), researcher in Social Behaviors at Behavior Works Australia, Monash Sustainable Institute, Monash University
- **Amanda Slevin**, Lecturer (United Kingdom), researcher in Social Policy, in the field of climate change, environmental sustainability and Irish political economy, Queen's University Belfast
- Pr **Peter Smith** (United Kingdom), former researcher in Social Psychology, former President of the International Association for Cross-cultural Psychology, etc.
- Pr **Thomas Smith** (USA), researcher in the field of Ecology and Behavior, Evolutionary, Founding Director of the Center for Tropical Research, Co-Executive Director of the Congo Basin Institute, recipient of a dozen academic honors, member of the National Geographic Society's Committee for Research and Exploration
- Pr **Falko Sniehotta** (United Kingdom), researcher in Behavioral Medicine and health Psychology, Director of Research for the Institute of Health and Society at Newcastle University (UK), former president of the European Health Psychology Society, etc.
- Pr **Anne Soderlund** (Sweden), Health Sciences Researcher at Malardalen University
- Pr **Alain Somat** (France), director of research in Social and Experimental Psychology at the University of Rennes (France)

- Pr **Werner Sommer** (Germany), researcher of psychophysiology, former Director of the Interdisciplinary Research Center for Conflicts in Intelligent Systems” and of the department of Psychology at the Humboldt-University of Berlin
- **Pascale Soria**, PhD (France), Psychologist
- **Mauricio Soto-Gamboa**, PhD (Chile), researcher in Cognitive Sciences, Austral University of Chile
- **Andromachi Spanouli**, PhD (Belgium), Psychologist, researcher in Organizational Psychology at Vrije University
- Pr **Jane Speight** (Australia), Foundation Director of the Australian Centre for Behavioural Research in Diabetes, Chair in Behavioural and Social Research in Diabetes, Deakin University (Australia), fellow of the British Psychological Society, Fellow of the Royal Society of Medicine
- **Roy Spina**, PhD (United Kingdom), researcher in Cognitive Sciences, University of Chichester
- **Florence Spitzenstetter**, MC (France), researcher in Cognitive Psychology at the Laboratory of Psychology of Cognitions at the University of Strasbourg (France)
- Pr **Narayanan Srinivasan** (India, भारत), researcher in Cognitive Sciences, University of Allahabad, Fellow of the National Academy Psychology (India), of the Association for Psychological Science, and of the Psychonomic Society, Award for Excellence of Allahabad University
- Pr **Svetlana Stanarević** (Serbia, Србија), researcher in Social Humanities, University of Belgrade – Faculty of Security Studies
- Pr **Dominique Steiler** (France), researcher in Management and Psychology, Grenoble Ecole de Management
- **Marieke Stein**, Lecturer (France), researcher in Communication, University of Lorraine
- Pr **Brigitte Steinmann** (France), researcher in Anthropology, Institute of Anthropology and Sociology of the University of Lille
- **Franziska Stelzer**, PhD (Germany), researcher in Economics, head of the Quality Control in Transdisciplinary Scientific Processes unit at Wuppertal Institute (Germany)
- **Per Espen Stoknes** (Norway), psychologist, deputy representative to the parliament of Norway, sustainable behavior specialist
- **Serge Stoleru**, PhD (France), Psychiatrist, Psychologist, researcher at the Paul-Brousse Hospital and INSERM (France)
- **Elisabetta Strazzera**, PhD (Italy), researcher of Economical Policies at University of Cagliari (Italy)
- **Brent Strickland**, PhD (Morocco), researcher in Cognitive Sciences, UM6P, ENS-ULM
- **Katharina Strohbach** (France), Psychologist, Centre Hospitalier Rouffach
- **Kirk Strosahl**, PhD (United States), co-founder of Acceptance and Commitment Therapy (ACT), Psychologist at HeartMatters Consulting LLC
- Pr **Cédric Sueur** (France), researcher in Animal Behavior at IPHC, Department of Ecology, Physiology, Ethology of the University of Strasbourg, Young scientist award from the French Society for the Study of Animal Behaviour (2013)
- Pr **Zoran Susanj** (Croatia), Psychologist, researcher in Psychology, University of Rijeka
- Dr **Mélanie Strauss** (Belgium), Neuroscientist at Erasme Hospital of the Free University of Brussels
- Pr **Rashid Sumaila** (Canada), Director of the Fisheries Economics Research Unit at University of British Columbia (UBC) Fisheries Centre, awarded of Peter Benchley Ocean Award for Excellence in Science, etc.

- Pr **Carolyn Summerbell** (United Kingdom), researcher in Health Sciences, member of the expert review panel of the MRC/NIHR/BBSRC funded UK Nutrition Research Partnership (UK NRP) Collaborative Awards, etc.
- **Seirian Sumner**, PhD (United Kingdom), researcher in Behavioral Ecology, University College of London
- Pr **Thomas Suddendorf** (Australia), researcher in Cognitive Sciences, University of Queensland, awarded from the Australian Academy of Social Sciences, the Australian Psychological Society and the American Psychological Association, etc.
- **Caterina Suitner**, PhD (Italy), researcher in Social Psychology at the Department of Developmental Psychology and Socialisation, University of Padova
- **Annika Svedholm-Hakkinen**, PhD (Finland), Researcher in Cognitive Sciences at the University of Helsinki
- Pr **Arielle Syssau-Vaccarella** (France), researcher in Cognitive Sciences at the EPSYLON Laboratory of the University Paul Valéry (Montpellier, France)
- **Barnabas Szazi**, PhD (Hungary), economist and psychologist, researcher Experimental Psychology at the Department of Affective Psychology, Institute of Psychology (ELTE) of the Eotvos Lorand University (Budapest, Hungary)
- Pr **Irme Szeman** (Canada), researcher in Humanities and Social Sciences, University of Waterloo, recipient of the John Polanyi Prize in Literature (2000), the Petro-Canada Young Innovator Award (2003), the Scotiabank-AUCC Award for Excellence in Internationalization (2004), an Alexander von Humboldt Fellowship (2005-7), the President's Award for Excellence in Graduate Supervision at McMaster University (2008), etc.
- Pr **Carmen Tabernero** (Spain), researcher in Social Psychology at the Department of Social Psychology and Anthropology of the University of Salamanca (Spain)
- **Diana Tamir**, PhD (United States), researcher in Affective and Social Neuroscience, director of the Princeton Social Neuroscience Lab of Princeton University (New Jersey, US)
- Pr **Guy Tapie** (France), researcher in Sociology, Ecole Nationale Supérieure d'Architecture et de Paysage de Bordeaux
- Pr **Frank Tarpin-Bernard** (France), researcher in Human-Computer Interaction, SBT, University Joseph Fournier 1
- **Alexander Taylor**, PhD (New Zealand), Researcher in cognitive sciences, University of Auckland
- Pr **Mesmin Tchindjang** (Cameroon), researcher in Biodiversity, University of Yaoundé
- **Predrag Teovanovic**, PhD (Serbia), researcher in Cognitive Sciences, Faculty for Special Education and Rehabilitation, University of Belgrade
- **Claudia Teran Escobar** (France), Psychologist, University of Grenoble-Alpes
- Pr **Antonio Terracciano** (United States), researcher in Geriatrics at the College of Medicine of the Florida State University
- **Florence Terrade**, PhD (France), director of research at the Laboratory of Psychology, Cognition, Behavior, Communication (LP3C) of the University of Rennes (France)
- Pr **Patrice Terrier** (France), researcher in Ergonomics and Cognitive Psychology at the University of Jean Jaurès (Toulouse, France)
- Pr **Ronan Thibault** (France), researcher at NuMeCan (Nutrition Metabolism Cancer) Institute, INSERM, INRA, University of Rennes, CHU Rennes
- Pr **Carlos Tirado – Echavarría** (Chile), researcher in Animal Ecophysiology at the University of Atacama
- Dr **Serge Tisseron** (France), Psychiatrist, Institute of Study of Robot-Human Interactions (France)

- Pr **Claudia Toma** (Belgium), researcher in Social Psychology and Organizational Behavior, associate professor at the Solvay Brussels School of Economics and Management (Belgium), Assistant Professor at Tilburg University (Netherlands)
- **Ian Tyndall**, PhD (United Kingdom), researcher in Cognitive and Behavioral Psychology at University of Chichester (Ireland)
- Pr **Janet Tomiyama** (United States), researcher of Psychology at the University of California (Los Angeles)
- **Minh-Xuan Trong**, PhD (France), researcher in Psychology of Conservation, Centre d'Écologie et des Sciences de la Conservation (CESCO), National Museum of Natural History (MNHN – Paris)
- Pr **Jérôme Trottignon** (France), researcher in Economics, University of Lyon
- Pr **Didier Truchot** (France), researcher in Social Psychology at the University of Franche Comté
- **Claudia Urs** (Romania), psychologist
- Pr **Jeroen Vaes** (Italy), researcher in Social Psychology, University of Trento
- **David Vaidis**, PhD (France), researcher in Social and Cognitive Sciences at the University Paris Descartes (France)
- **David Val-Laillet**, PhD (France), researcher in Cognitive Sciences, INRA
- Pr **Corneel Vandelanotte** (Australia), researcher in Health Sciences, Central Queensland University (Australia)
- Pr **Philippe Van Den Bosch** (Belgium), Emeritus Professor in the field of Neurobiology and Biological Anthropology at the Catholic University of Louvain, President of the Funds of the Institute of Environmental Medicine (Paris)
- **Yoni Van Den Eede**, PhD (Belgium), researcher in Humanities and Social Sciences at Vrije University
- **Bellinda Van Der Hout** (France), Psychologist at IME Conseil
- Pr **Colette van Laar** (Belgium), researcher in Social Psychology, University of Leuven
- **Elke Van Lierde** (Belgium), researcher in Cognitive Sciences at Vrije University
- Pr **Frank Van Overwalle** (Belgium), researcher in Affective and Social Neuroscience, University of Vrije
- Pr **Jacques Van Rillaer** (Belgium), Psychologist, emeritus professor of Psychology, University of Louvain
- Pr **Vincent Van Waes** (France), researcher in Neurosciences at the University of Bourgogne-Franche Comté
- Pr **José Luiz Vazquez Burguete** (Spain), researcher in Management, University of Leon
- **Jenny Veldman** (Belgium), researcher in Social Psychology, University of Leuven
- **Jose J. Veron**, PhD (Spain), researcher in Humanities and Social Sciences, University of San Jorge
- **Sonia Veyssières** (France), researcher in Sustainable Economy, ADEME
- **Virginie van Wassenhove**, PhD (France), researcher in Cognitive Sciences, Center of Atomic Studies (CEA, France), NeuroSpin, INSERM
- Pr **Anna van Wersch** (United Kingdom), Psychologist, Emeritus Professor of Psychology, Durham Research
- **Susana Varela**, PhD (Portugal), researcher in Affective and Social Neuroscience at the IGC – Gulbenkian Institute of Sciences
- **Camille Vergnaud** (France), researcher in Geography, University Grenoble-Alpes
- **Beth Ventura**, PhD (USA), researcher in Animal Behavior, University of Minnesota
- Dr **Thierry Verdoodt** (Belgium), Physician, Neurolead
- Pr **Steven Verheyen** (Netherlands), researcher in Cognitive Sciences Erasmus University Rotterdam

- Pr **Nicolas Vermeuren** (Belgium), researcher at the Psychological Sciences Research Institute of the Catholic University of Louvain
- **Ophélie Véron**, PhD (United Kingdom), researcher in Human Geography and Social Sciences, University of Sheffield, founder of Antigone XXI
- **Luis Vicente**, PhD (Portugal), researcher in Animal Behaviour, Neurobiology, Philosophy of Sciences at University of Lisbon, founder of the Portuguese Society of Ethology and of the Portuguese Association of Primatology
- **Thibault Vicente** (France), researcher in Psychoacoustics, University of Lyon, ENTPE
- **Alessandro Vieno**, PhD (Italy), Health Sciences Researcher, University of Padova
- **Matthieu Villatte**, PhD (United States), researcher in Psychology at Bastyr University (USA)
- **Dominic Villeneuve**, PhD (Germany), researcher in Transport Planning, Chair of Urban Structure and Transport Planning, Department of Civil Geo and Environmental Engineering, Technical University Munich
- Pr **Delia Virga** (Romania), psychologist, researcher at West University of Timisoara, president of the Romanian Association of Industrial Psychology and Organizations, etc.
- **Gil Viry**, PhD (United Kingdom), researcher in Space Mobility, University of Edinburgh
- **Anne Vogt** (Germany), researcher in Cognitive Psychology, Humboldt University
- Pr **Bettina von Helversen** (Germany), Psychologist, researcher in Psychology at University of Bremen
- Dr **Lauriane Vulliez** (France), psychiatrist at the Hospital and University Center of Besançon (France)
- **Pascal Vrticka**, PhD (Germany), Researcher in Affective and Social Neuroscience at the "Social Stress & Family Health" research group of Max Planck Institute for Human Cognitive and Brain Sciences
- **Tony Wainwright**, PhD (United Kingdom), Psychologist, University of Exeter
- **Daniel Waldeck**, PhD (United Kingdom), Psychologist, researcher at [Department of Psychology and Behavioural Sciences](#), Coventry University, (UK)
- **Clare Walsh**, PhD (United Kingdom), researcher in Cognitive Sciences at the University of Plymouth (UK)
- **Ronie Walters** (United Kingdom), researcher in Health Sciences, Uhi
- **Geoffrey Wango**, PhD (Kenya), researcher in Philosophy, Department of Psychology, University of Nairobi
- **Kristel Wanneau** (Belgium), researcher in Humanities and Social Sciences, ULB
- **Timothy Waring**, PhD (United States), researcher in the field of Human Culture and Cooperation in relationship to the Environment, University of Maine (USA)
- Pr **Lisa Marie Warner** (Germany), Psychologist, MSB Medical School Berlin
- Pr **Grazyna Wasowicz** (Poland), Psychologist, researcher in Economic Psychology and Consumer Behaviour at the Kozminski University
- **Sylvain Weber**, PhD (Switzerland), Researcher in Economics, University of Neuchâtel
- Pr **Karine Weiss** (France), researcher in Social and Environmental Psychology, University of Nîmes (France)
- **Janina Welsch**, PhD (Germany), researcher in the field of Mobility and Transport Behavior, ILS-Research Institute for Regional and Urban Development
- Pr **Nele Wild-Wall** (Germany), researcher in Cognitive Sciences, Rhine-Waal University of Applied Sciences
- Pr **Marié P. Wissing** (South Africa), researcher in Health Sciences of the Africa Unit for Transdisciplinary Health Research, North-West University
- **Ben Whalley**, PhD (United Kingdom), Researcher in cognitive sciences at Plymouth University

-
- **Alison Wright**, PhD (United Kingdom), researcher in Behavior Change, University College of London
 - **Glen Wright**, PhD (France), researcher in Environmental Law, IDDRI
 - **Emily You**, PhD (Australia), Research Fellow at the Academic Unit for Psychiatry of Old Age, University of Melbourne
 - Pr **Vincent Yzerbyt** (Belgium), Professor of Social Psychology and Fellow of the Society for Experimental Social Psychology, Catholic University of Louvain
 - **Anoushiravan Zahedi** (Germany), researcher in Biological Psychology, Humboldt University
 - Pr **Adroaldo Zanella** (Brazil), researcher in Animal Welfare, One Welfare, university of Sao Paulo
 - **Anna Maria Zawadzka**, PhD (Poland), researcher in Psychology, Head of Department of Economic Psychology and Organizational Psychology, Institute of Psychology, University of Gdansk
 - Pr **Iris Zezelj** (Serbia), Psychologist, University of Belgrade
 - Pr **Pavel Zgaga** (Slovenia), researcher in Philosophy and Education Policy, University of Ljubljana, former Secretary for Higher Education and Minister of Education and Sport, co- founder of the Center for Educational Policy Studies (CEPS, University of Ljubljana)
 - **Janis Zickfeld** (Norway), researcher in Social Psychology, University of Oslo
 - **Julian Zubek**, PhD (Poland), Researcher in cognitive sciences, University of Warsaw
 - Pr **Daniele Zullino** (Switzerland), Psychiatrist, Director of the Addictology Unit of the University of Geneva

Researchers in others fields : biology, ecology, physics, oceanography...

- **Romain Allais**, PhD (France), researcher in the field of Sustainability at APESA and PACTE Laboratory of the University of Grenoble-Alpes (France)
- **Kadiom Amidou** (Tchad), Head of the Division of Protected Areas and of Biodiversity Conservation, National Focal Point of the Cartagena Protocol, Direction of the Conservation of the Wildlife and Protected Areas, Ministry of Environment, Water and Fishing (Tchad)
- Pr **Isabelle Anguelovski** (Spain), researcher in Urban Planning and director of the Barcelona Plan for Urban Environmental Justice and Sustainability at the Institute of Environmental Sciences and Technologies (ICTA, Spain)
- **Arthur Hermas Attingli**, PhD (Benin), researcher in the field of Water Pollution, University of Abomey-Calavi
- Pr **Stéphane Aulagnier** (France), researcher in the field of Ecology, University Paul Sabatier (Toulouse, France)
- Pr **Leonardo Bacigalupe** (Chile), researcher in Ecology and Conservation, Austral University of Chile
- Pr **Rigers Bakiu** (Albania), researcher, Head of the Aquaculture Research Group, Head of the International Relations Office, Agricultural University of Tirania
- Pr **Maurizio Barbieri** (Italy), associate professor and manager of the Geochemistry Laboratory at the Earth Sciences Department/ Faculty of Mathematics, Physics and Natural Sciences (SMFN) at Sapienza University of Rome (Italy)
- **Giovanni Bearzi**, PhD (Italy), researcher in Marine Biology at Dolphin Biology and Conservation (Italy)
- **Maddalena Bearzi**, PhD (USA), researcher in Biology, Co-Founder and President of the Ocean Conservation Society, Los Angeles Dolphin Project Director, expert for the National Geographic
- Pr **Marc Bekoff** (United States), Professor emeritus of Ecology and Evolutionary Biology, University of Colorado (Boulder), co-founder, with Jane Goodall of the organization [Ethologists for the Ethical Treatment of Animals: Citizens for Responsible Animal Behavior Studies](#)
- **Nouha Ben Messaoud**, PhD (Tunisia), Researcher in Materials Chemistry, INSAT
- Pr **Nard Bennas** (Morocco), researcher in the field of Hydrobiology, Biomonitoring of freshwater, Taxonomie and Biogeography of Aquatic Insects, Conservation Biodiversity, Abdelmalek Essaâdi University
- Pr **Angela Biancofiore** (France), researcher in Ecology and Art at the University Paul Valéry Montpellier III (France)
- **Sylvain Blondeau**, PhD (France), researcher in Geomorphology, University Lyon Lumière
- **Thomas Boivin**, PhD (France), researcher in the field of Forest and Invasion Ecology, INRA
- Pr **Peter Bossier** (Belgium), researcher in Aquaculture and director of the Laboratory of Aquaculture & Artemia Reference Center at Ghent University

- Pr **Francisco Bozinovic** (Chile), researcher in the field Ecological and evolutionary physiology, Global Change Physiology, at the Pontifical and Catholic University of Chile, elected member of the Chilean National Academy of Sciences, recipient of the Universidad de Chile Award in the sciences and humanities, the Distinguished Scientist Medal from the Chile's Croatian community, the Scopus Award from Elsevier, and the Patricio Sánchez Award from the Ecological Society of Chile
- **Michael Briga**, PhD (Finland), researcher in Ecology at University of Turku (Finland)
- **José Carlos Brito**, PhD (Portugal), researcher in Biological Sciences, CIBIO-InBio, University of Porto
- **Morgane Cabon** (France), engineer in the field of Sensors Development at CERN (European Organization for Nuclear Research)
- **David Canal**, PhD (Argentina), researcher in Ecology at CONICET
- **Aurélie Capdevielle**, PhD (France), researcher in Ecology and Process Engineering at the University Paul Sabatier (ECOLAB, Toulouse, France)
- Pr **Filomena Cardoso Martins** (Portugal), researcher at the Department of Environment and Planning of the University of Aveiro (Portugal), Coordinator of Sea Technology Platform
- Pr **Martina Carrete** (Spain), researcher in Ecology, University Pablo de Olavide
- Pr **Ismael Castelazo** (Mexico), researcher in Metrology, National Metrology Center
- **Eduardo Cepeda**, PhD (France), researcher in Mathematics at TOBAM
- **Samantha Cheng**, PhD (USA), researcher and Associate Director of Conservation Evidence, Center for Biodiversity Outcomes, Julie Ann Wrigley Global Institute of Sustainability of Arizona State University
- **Fabrice Chevalier**, PhD (France), former researcher in Informatics, Rectorship of Versailles
- **Ricardo Correia**, PhD (Portugal), Researcher in Environmental Sciences at the University of Aveiro (Portugal)
- **Antoine Coutant**, PhD (France), former researcher in Mathematics at ENS, teacher, Rectorship of Versailles
- Pr **Denis Couvet** (France), director of the Ecology and Biodiversity Management department of the National Museum of Natural History (France), member of the French Academy of Agriculture and of the High Council of Biotechnologies
- Pr **Richard Cowling** (South Africa), researcher in Biology and Conservation at Nelson Mandela University
- **Larry B. Crowder**, PhD (United States), Edward Ricketts Professor of Marine Biology and Conservation, Hopkins Marine Station, Department of Biology, Stanford University, Pacific Grove, California
- Pr **Fredrik Dalerum** (Spain), Researcher in Ecology in the Unit for Biodiversity of University of Oviedo (Spain)
- **Chloé Dezani**, PhD (France), researcher in Water depollution, Laboratory of Processes, Materials and Solar Energy, University of Perpignan (France)
- **Catia Domingues**, PhD (Australia), physical oceanographer, researcher in the field of Ocean Climate and Sea Level Change at the Antarctic Climate and Ecosystems Cooperative Research Center of the University of Tasmania (Australia)
- Dr **Jigdrel Dorji** (Bhutan), researcher in Ecology at the College of Natural Resources of the Royal University of Bhutan
- Pr **Don Driscoll** (Australia), Researcher in Ecology and cross disciplinary research, Director of TechnEcology interdisciplinary research network at Deakin University (Australia), President of the [Ecological Society of Australia](#)

- **Emilie Dubard** (France), researcher in Alternative Energy at CNRS
- **Carlos Frederico Duarte Rocha**, PhD, (Brazil), Full Professor of Ecology, Department of Ecology, Institute of Biology, Rio de Janeiro State University, Rio de Janeiro, Brazil
- **Pim Edelaar**, PhD (Spain), researcher in Evolutionary Biology, University Pablo de Olavide
- **Hubert Gallée**, HDR (France), researcher in Meteorology and Climatology, Institute of Geosciences of Environment, University of Grenoble
- **Vincent Gerbaud**, PhD (France), CNRS research Director in the field of Thermodynamics of self organized systems
- Pr **Magali Gerino** (France), researcher in Environmental Sciences at the University Paul Sabatier (ECOLAB, Toulouse, France), President of the Scientific Council of the Conservatory of Natural Spaces of Midi-Pyrénées
- **David Gonçalves**, PhD (Portugal), researcher in Conservation Biology at CIBIO-InBIO
- **Saradoum Goy**, PhD (Tchad), researcher in Ecology and Botany, University of Sarh
- **Juan Guayasamin**, PhD (Ecuador), researcher in Evolutionary Biology, Universidad San Francisco de Quito
- **Vinicius Guerra**, PhD (Brazil), researcher in the field of Ecology, Federal University of Goias
- Pr **Jason Hall-Spencer** (United Kingdom/ Japan), researcher in Marine Science, University of Plymouth and University of Tsukuba, University of Plymouth World Class Researcher Award...
- **Stéphane Hans**, PhD (France), researcher in Civil Engineering, Laboratoire de Tribologie Dynamique des Systèmes (LTDS), ENTPE
- **Gavin Harper**, PhD (United Kingdom), researcher in the field of Secure Future Energy Systems at School of Physics and Astronomy of University of Birmingham (UK)
- Pr **Jie He** (China), researcher in the field of Urban Sustainability at the Department of Landscape Architecture and Associate Director of Digital Design at the School of Architecture of Tianjin University (China)
- **Samir Kebour**, PhD (Algeria), Doctor in Pharmacology, FASCINE Institute
- **Frida Keuper**, PhD (France), researcher in Ecology at the French National Institute for Agricultural Research (INRA)
- **Sebastian Kirchhof**, PhD (United Arab Emirates), researcher in the field of Evolutionary genomics, Adaptation, Evolution, Ecophysiology, at New York University Abu Dhabi
- **Anne-Sophie Lafuite**, PhD (France), researcher at the Center for Biodiversity Theory and Modelling (Center of Scientific National Research, CNRS, France)
- Pr **Amaury Lambert** (France), researcher in Mathematics and Evolutionary Biology at Sorbonne University
- Pr **Françoise Lamnhabi** (France), physics scientific director at the National Center of Scientific Research (CNRS, France), awarded of Legion of Honor (France)
- Pr **Byron Lamont** (Australia), researcher in the field of Conservation biology, paleoecology at the Department of Environmental Biology of Curtin University (Australia), Honorary Life Member of the South African Association of Botanists, Visiting Lecturer Award of British Ecological Society, etc.
- Pr **Nadine Laporte** (USA), researcher in the field of Tropical forest monitoring / REDD+ / Remote sensing at the Northern Arizona University, consultant for the USAID Biodiversity Program (Washington DC), World Wildlife Fund, Wildlife Conservation Society (NY, USA), Center for International Forestry Research (India), Joint Research Center (Tropical Ecosystem Environmental Observation by Satellite, Italy), etc.

- **Laurent Lassabatere**, PhD (France), researcher in the field of Environment, ENTPE
- **Vincent Léchappé**, PhD (France), researcher in Automatics, INSA Lyon
- **François Léger**, PhD (France), researcher in Ecology at AGROPARISTECH
- **Mélanie Leroy**, PhD (France), researcher in Geomorphology, University of Savoie
- **José Vicente López Bao**, PhD (Spain), researcher in Ecology and Conservation Biology, Unit of Biodiversity, Oviedo University (Spain)
- Pr **Jonathan Majer** (Australia), researcher in the field Monitoring of environment using insects as bioindicators, founder and director of Biomonitoring International (Australia), Fellow of the Royal Entomological Society of London ; Member of the following: Australian Entomological Society, Royal Society of Western Australia, Environmental Institute of Australia and New Zealand, etc.
- **Mariana Mamane** (Burkina Faso), engineer in the field of Water and Environment, founder of JACIGREEN
- **Pierre Manil** (France), engineer in Physics, Center of Atomic Studies (CEA, France)
- **Chloé Maréchal**, PhD (France), researcher Earth Sciences, Observatoire de Lyon
- Pr **Wilfrid Marquis-Favre** (France), researcher in Automatics, Laboratoire Ampère, National Institute of Applied Sciences (INSA),
- **Gabrielle Martin** (France), researcher in Ecology, National Museum of Natural History (MNHN, Paris)
- Pr **Lynn Martin** (USA), researcher in Ecology and Evolutionary biology at the University of South Florida
- **Martin Marzloff**, PhD (France), researcher in the field of Marine Ecosystem at Institut Français de Recherche pour l'Exploitation de la Mer (IFREMER)
- Pr **Moudachirou Mansourou** (Benin), researcher in Chemistry, University of Abomey- Calavi
- **Joan Massich**, PhD (France), researcher in Informatics and Imagery, INRIA
- Pr **Sylvia Mazzuca** (Italy), researcher in the field of Marine Ecosystem at the University of Calabria (Italy)
- Pr **Santiago Merino** (Spain), researcher in Ecology at National Museum of Natural Sciences of Spain
- **Geoffrey Meshabi** (France), engineer in Agroecology at the Laboratory of Agronomy and Environment of the University of Lorraine
- **Claude Monteil**, PhD (France), researcher in Modeling complex agroecological systems, INRA, University of Toulouse (DYNAFOR Lab, Dynamics and Ecology of Agricultural and Forest Landscapes)
- **Sofia Morcelle** (Spain), researcher in Biodiversity at SEO/ BirdLife
- **Erla Olsen**, PhD (Faroe Islands, Føroyar), researcher in the field Biology and science didactics, Faculty of Education, University of the Faroe Islands
- Pr **Jeanine Olsen** (Netherlands), researcher in Marine sciences, biological oceanography, benthic ecology, genomics, biodiversity at the University of Groningen (Netherlands)
- **Dominique Pelletier**, PhD (France), researcher in Biodiversity conservation and fisheries sustainability at the Institut Français de Recherche pour l'Exploitation de la Mer (IFREMER)
- **François Pellissier**, PhD (France), researcher in Ecology, University Savoie Mont Blanc
- **Julie Pierson** (France), engineer in Geomatics, CNRS
- **Kevin Potard**, PhD (France), data scientist at Capgemini, former researcher in Biology at the University of Rennes

- Pr **Dmitri Pozniakov** (Russian Federation), researcher in Physics at the Nansen International Environmental and Remote Sensing Centre (NIERSC, Russia), leader of the Aquatic Ecosystems in Response to Global Change Group, The Chandler-Misener Award (in 1992 and 2006) of the International Association for Great Lakes Research for the research on hydro- optics and remote sensing of lakes Ontario, Michigan and Ladoga
- Pr **Mihallaq Qirjo** (Albania), researcher in Natural Sciences, Faculty of Natural Sciences, Tirana University
- Pr **Andrianelison Rakotomahevitra** (Madagascar), researcher in the field of Condensed Matter in physics, Head of Institut pour la Maîtrise de l'Energie
- **Ravo Ramanantsoa**, PhD (Madagascar), researcher in physics, University of Antananarivo
- **Hugo Rebelo**, PhD (Portugal), researcher in the field of Ecology and Conservation Biology, CIBIO/InBIO
- Pr **Joan Rieradevall** (Spain), researcher in Environmental Science and Technology, ICTA UAB (Spain)
- **Euan Ritchie**, PhD (Australia), Researcher in Ecology and conservation, Deputy Convenor, Communication and Outreach, Deakin Science and Society Network, Director (Media Working Group) at Ecological Society of Australia, Associate Editor for Austral Ecology and Scientific Reports Centre for Integrative Ecology, School of Life and Environmental Sciences, Faculty of Science Engineering & Built Environment, Deakin University (Australia)
- Pr **Hervé Rivano** (France), researcher in Informatics, head of the [Inria/INSA Lyon common team Agora](#) of the [CITI lab](#)
- **Uri Roll**, PhD (Israel), researcher in the field of Conservation biology at Ben-Gurion University (Israel)
- Pr **Svetla Rousseva** (Bulgaria), Head of Soil Science Direction at the Institute of Soil Science, Agrotechnologies and Plant Protection “N. Poushkarov”
- **Renison Ruwa**, PhD (Kenya), researcher in the field of Ecology at Kenya Marine and Fisheries Research Institute
- **José Miguel Sanchez-Perez**, PhD (France), researcher at the Laboratory Écologie Fonctionnelle et Environnement (CNRS, France)
- **Cyrille Santerre** (France), Chemical Engineer at ISIPCA
- Dr **François Sarano** (France), oceanographer, former scientific adviser of commandant Cousteau and former scientific chief of the Deep Ocean Odyssey program
- **Chimnoy Sarkar**, PhD (China), professor at the Healthy High Density Cities Lab of the University of Hong Kong
- **Patrice Schneuwly** (France), researcher in Building Energy Performance, INES (CEA)
- **Karma Sherub**, M.Sc. (Bhutan), expert in Biodiversity at the College of Natural Resources of the Royal University of Bhutan
- Pr **Barry Sinervo** (USA), researcher in Ecology and Evolutionary Biology, Director of the Institute for Ecological and Evolutionary Climate Impacts, University of California, Santa Cruz
- **Bhagat Suberi**, PhD (Bhutan), researcher in Ecology at the College of Natural Resources of the Royal University of Bhutan
- **Maurice Tankou** (Cameroon), Agroeconomist, Agricultural and Rural Development Policy Analyst, United Nations Commission for Africa

-
- Pr **Natalia Tarassova** (Russia), Chair holder, UNESCO Chair in Green Chemistry for Sustainable Development
 - Pr **Margareta Tengberg** (France), researcher in Archeobotany and executive board member of the National Museum of Natural History (France)
 - **Roman Teisserenc**, MC (France), researcher in the field of Environmental Science at the Institut National Polytechnique of Toulouse (France)
 - Pr **Anne Teyssèdre** (France), researcher in the field of Biological Evolution, scientific member of the French Society of Ecology and Evolution, etc.
 - **Sarah Voirin** (France), Climate Officer, French Observatory on the effects of climate change (ONERC), University of Paris-Saclay
 - **Emiliya Velizarova**, PhD (Bulgaria), associate researcher at the Forest Research Institute of Bulgaria
 - **Marieke Verhagen** (Netherlands), researcher in Sustainability Transitions, Dutch Research Institute for Transitions
 - Pr **Laurie Vitt** (USA), researcher in Ecology and emeritus professor at George Lynn Cross and Sam Noble Museum of University of Oklahoma (USA)
 - Pr **Didier Voisin** (France), researcher in Chemistry of atmosphere, University of Grenoble- Alpes
 - **Enock Wakwabi**, PhD (Kenya), researcher in the field of Fisheries and Marine Ecology at Kenya Marine and Fisheries Research Institute
 - Pr **Stephen Wheeler** (United States), researcher in Urban planning, urban design, climate change planning at University of California, Davis, June Dale Prize for Excellence in Urban and Regional Planning, Chester Rapkin Award for best article published in the Journal of Planning Education and Design, etc.
 - **Barbara Widmer** (Switzerland), Health Professional, Kantonsspital Aarau AG
 - **Afouda Jacob Yabi**, PhD (Benin), researcher in Sustainable agriculture and Agriculture Policy, University of Parakou (Benin)
 - Pr **John Zacharias** (China), researcher at the College of Architecture and Landscape of the University of Peking (China)
 - **Caroline Zaoui**, PhD (Belgium), researcher in microbiology at the Earth and Life Institute of the Catholic University of Louvain, environmental sustainability consultant in charge of Novobiom's Research & Innovation

Others

- **Delphine Astier** (France), Director of Monde Pluriel (NGO)
- **Simon Bernard** (France), marine engineer in the merchant navy, co-founder of Plastic Odyssey, award of the Green Tech Verte of the Ministry of Environment (France, 2016)
- **Patrick Busquet** (France), President of Information pour le Monde Suivant
- **Thomas Busuttil** (France), Founder and General manager of IMAGIN/ABLE, a sustainable consulting firm dedicated to the model transition
- **Kelly Claborn** (United States), research in the field of Conservation Evidence, WWF
- **Sonia Cortesse** (France), Sustainable Urbanism Architect
- **Raphaël Danglade** (Belgium), Programme Manager for Climate and Energy, Friends of Europe
- **Sabrina Delannoy** (France), Vice-President of the PSG Foundation
- **Arnaud Gauffier** (France), Conservations Program co-director of WWF France, former Head of Food and Agriculture department at WWF France
- **Tuki Jencquel** (Germany), documentary filmmaker, nominated for the International Documentary Filmfestival of Amsterdam, and for the Sheffield Doc Fest
- **Karima Kadda touati Eps Bergheul** (Algeria), president of the Association women in green economy
- **Soren Knudsen** (Philippines), Director of NGO involved in Marine Conservation (Philippines)
- **Elisabeth Laville** (France), founder of UTOPIES (#1 French sustainability think-tank and consultancy)
- **Valérie Lorentz-Poinsot** (France), CEO, Boiron Laboratories
- **Stéphane Mifsud** (France), World Record Freedive, founder of Odyssey Bleue (movement for the protection and the discovery of the underwater world)
- **Arielle Moreau** (France), lawyer, SCP MNHK
- **Rosemary Morrow** (Australia), co-founder of Blue Mountains Permaculture Institute
- **Jacques Moulin** (France), President, De Dietrich SAS
- **Guillaume Nery** (France), World champion freediver
- **Sophie Nunziati** (France), director, AGENCE VERTE
- **Mario Passalacqua** (Canada), Consultant in Information Technology
- **Carole Peon** (France), pedagogue, Olympic champion of Triathlon
- **Guillaume Pitron** (France), Journalist (National Geographic, others), documentary maker, Izraelezewicz Prize for best investigative report of the year, awarded by the leading daily newspaper Le Monde, and the award for best economic book of the year by BFMTV
- **Benjamin Pont** (France), President of Habitat et Partage
- **Augusta Ramaccioni** (Belgium), Programme Manager for International Development, Friends of Europe
- **Maina Sage** (France), Member of the French Parliament (French Polynesia)
- **Théo Sanson** (France), world record of Slackline, ambassador of the Elemen'terre project
- **Marie Tabarly** (France), navigator, initiator of the Elemen'terre project (aboard the Pen Duick VI), which aim to raise the awareness facing global issues
- **Françoise Touboul** (France), Sustainable development director, Center of Atomic Studies (France)

To complete...

Contacts

COORDINATRICE INTERNATIONALE DU COMITÉ MÉDIA

Camille Lefrançois-Coutant
General Secretary, Co-founder, Member of Board
camille.lefrancois-coutant@ipbc.science

RÉFÉRENT MÉDIA INTERNATIONAL & FRANCE

Stéphane La Branche
Coordinator of the Executive Committee
stephane.labranche@ipbc.science

RÉFÉRENT MÉDIA FRANCE & INTERNATIONAL

Jacques Fradin
Chairman, Co-founder. Member of Board
jacques.fradin@ipbc.science

Conception graphique :
Céline Butin, Communication Marketing Advisor
celine.butin@yahoo.fr

Crédits photo : Canva

CONTACT

Dr Camille Lefrançois-Coutant :

- +33 (0)6 99 23 81 40
- camille.lefrancois-coutant@ipbc.science

